



ELECTRONIC COPY

LG784646175
Report verification at igi.org



May 7, 2026

IGI Report Number LG784646175

Description LABORATORY GROWN DIAMOND

Shape and Cutting Style PRINCESS CUT

Measurements 7.14 X 6.89 X 4.90 MM

GRADING RESULTS

Carat Weight 2.09 CARATS

Color Grade D

Clarity Grade FLAWLESS

May 7, 2026
IGI Report Number LG784646175
Description LABORATORY GROWN DIAMOND
Shape and Cutting Style PRINCESS CUT
Measurements 7.14 X 6.89 X 4.90 MM

GRADING RESULTS

Carat Weight 2.09 CARATS

Color Grade D

Clarity Grade FLAWLESS

ADDITIONAL GRADING INFORMATION

Polish EXCELLENT

Symmetry EXCELLENT

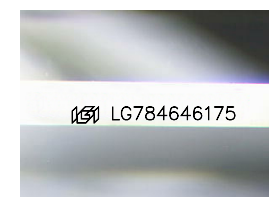
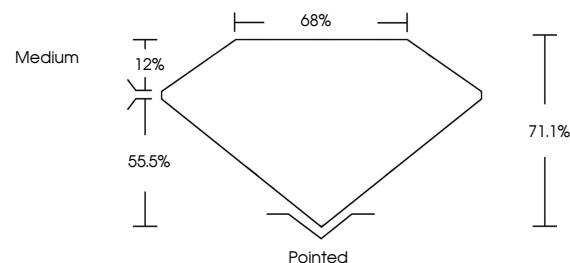
Fluorescence NONE

Inscription(s) LG784646175

Comments: As Grown - No indication of post-growth treatment.

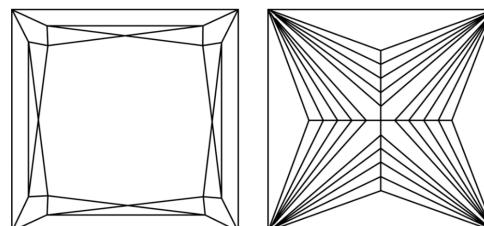
This Laboratory Grown Diamond was created by High Pressure High Temperature (HPHT) growth process. Type II

PROPORTIONS



Sample Image Used

CLARITY CHARACTERISTICS



KEY TO SYMBOLS

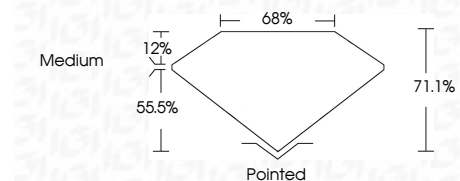
Red symbols indicate internal characteristics. Green symbols indicate external characteristics.

COLOR

D E F G H I J Faint Very Light Light

CLARITY

Table with columns: FL, IF, VS 1-2, VS 1-2, SI 1-2, I 1-3. Row: Flawless, Internally Flawless, Very Very Slightly Included, Very Slightly Included, Slightly Included, Included



ADDITIONAL GRADING INFORMATION

Polish EXCELLENT

Symmetry EXCELLENT

Fluorescence NONE

Inscription(s) LG784646175

Comments: As Grown - No indication of post-growth treatment.

This Laboratory Grown Diamond was created by High Pressure High Temperature (HPHT) growth process. Type II



IGI



May 7, 2026
IGI Report No LG784646175
PRINCESS CUT
2.09 CARATS D
7.14 X 6.89 X 4.90 MM
Color Grade FLAWLESS
Depth 71.1%
Table 55.5%
Girdle Medium
Culet Pointed
Polish EXCELLENT
Symmetry EXCELLENT
Fluorescence NONE
Inscription(s) LG784646175
Comments: As Grown - No indication of post-growth treatment. This Laboratory Grown Diamond was created by High Pressure High Temperature (HPHT) growth process. Type II