



ELECTRONIC COPY

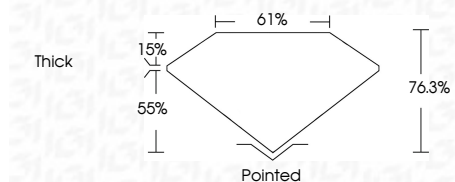
LG784645473
Report verification at igi.org



April 25, 2026
IGI Report Number **LG784645473**
Description **LABORATORY GROWN DIAMOND**
Shape and Cutting Style **HEXAGONAL MIXED CUT**
Measurements **10.49 X 6.00 X 4.58 MM**

GRADING RESULTS

Carat Weight **2.00 CARATS**
Color Grade **D**
Clarity Grade **FLAWLESS**



ADDITIONAL GRADING INFORMATION

Polish **EXCELLENT**
Symmetry **EXCELLENT**
Fluorescence **NONE**
Inscription(s) **IGI LG784645473**
Comments: As Grown - No indication of post-growth treatment.
This Laboratory Grown Diamond was created by High Pressure High Temperature (HPHT) growth process.
Type II



April 25, 2026
IGI Report No LG784645473
HEXAGONAL MIXED CUT
10.49 X 6.00 X 4.58 MM
2.00 CARATS
D
FLAWLESS
76.3%
61%
Thick
Pointed
EXCELLENT
EXCELLENT
NONE
IGI LG784645473

Comments: As Grown - No indication of post-growth treatment.
This Laboratory Grown Diamond was created by High Pressure High Temperature (HPHT) growth process.
Type II

April 25, 2026
IGI Report Number **LG784645473**
Description **LABORATORY GROWN DIAMOND**
Shape and Cutting Style **HEXAGONAL MIXED CUT**
Measurements **10.49 X 6.00 X 4.58 MM**

GRADING RESULTS

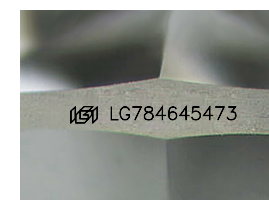
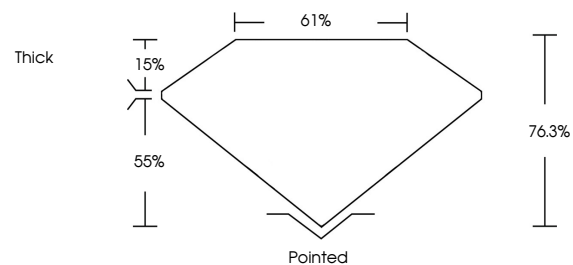
Carat Weight **2.00 CARATS**
Color Grade **D**
Clarity Grade **FLAWLESS**

ADDITIONAL GRADING INFORMATION

Polish **EXCELLENT**
Symmetry **EXCELLENT**
Fluorescence **NONE**
Inscription(s) **IGI LG784645473**

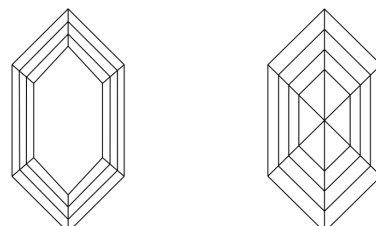
Comments: As Grown - No indication of post-growth treatment.
This Laboratory Grown Diamond was created by High Pressure High Temperature (HPHT) growth process.
Type II

PROPORTIONS



Sample Image Used

CLARITY CHARACTERISTICS



KEY TO SYMBOLS

Red symbols indicate internal characteristics.
Green symbols indicate external characteristics.

COLOR

D E F G H I J Faint Very Light Light

CLARITY

FL	IF	VS ¹⁻²	VS ¹⁻²	SI ¹⁻²	I ¹⁻³
Flawless	Internally Flawless	Very Very Slightly Included	Very Slightly Included	Slightly Included	Included

