



**ELECTRONIC COPY**

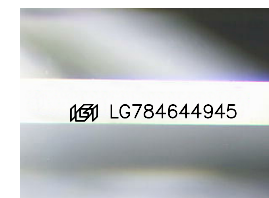
LG784644945  
Report verification at igi.org



April 20, 2026  
IGI Report Number **LG784644945**  
Description **LABORATORY GROWN DIAMOND**

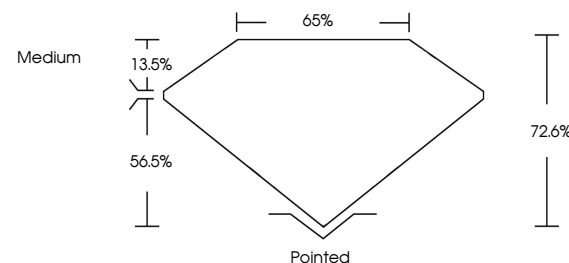
Shape and Cutting Style **PRINCESS CUT**  
Measurements **7.16 X 6.97 X 5.06 MM**

**GRADING RESULTS**  
Carat Weight **2.22 CARATS**  
Color Grade **D**  
Clarity Grade **FLAWLESS**

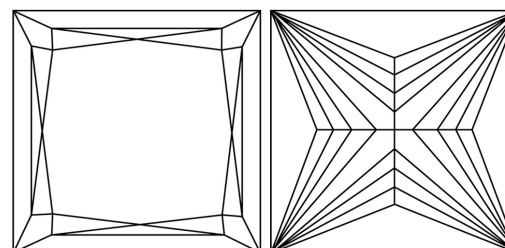


Sample Image Used

**PROPORTIONS**



**CLARITY CHARACTERISTICS**



**KEY TO SYMBOLS**

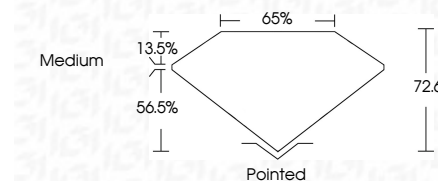
Red symbols indicate internal characteristics.  
Green symbols indicate external characteristics.

**COLOR**

D E F G H I J Faint Very Light Light

**CLARITY**

FL	IF	VS <sup>1-2</sup>	VS <sup>1-2</sup>	SI <sup>1-2</sup>	I <sup>1-3</sup>
Flawless	Internally Flawless	Very Very Slightly Included	Very Slightly Included	Slightly Included	Included



**ADDITIONAL GRADING INFORMATION**

Polish **EXCELLENT**  
Symmetry **EXCELLENT**  
Fluorescence **NONE**  
Inscription(s) **IGI LG784644945**  
Comments: As Grown - No indication of post-growth treatment.  
This Laboratory Grown Diamond was created by High Pressure High Temperature (HPHT) growth process.  
Type II



**IGI**



April 20, 2026  
IGI Report No LG784644945  
PRINCESS CUT  
2.22 CARATS  
D  
7.16 X 6.97 X 5.06 MM  
Color Grade  
FLAWLESS  
Depth 72.6%  
Table 65%  
Girdle  
Medium  
Pointed  
Polish EXCELLENT  
Symmetry EXCELLENT  
Fluorescence NONE  
Inscription(s) IGI LG784644945  
Comments: As Grown - No indication of post-growth treatment.  
This Laboratory Grown Diamond was created by High Pressure High Temperature (HPHT) growth process.  
Type II