



**INTERNATIONAL
GEMOLOGICAL
INSTITUTE**

ELECTRONIC COPY

LABORATORY GROWN DIAMOND REPORT

April 17, 2026
 IGI Report Number **LG784644765**
 Description **LABORATORY GROWN DIAMOND**
 Shape and Cutting Style **ROUND BRILLIANT**
 Measurements **5.23 - 5.25 X 3.17 MM**

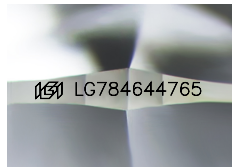
GRADING RESULTS

Carat Weight **0.54 CARAT**
 Color Grade **D**
 Clarity Grade **FLAWLESS**
 Cut Grade **IDEAL**

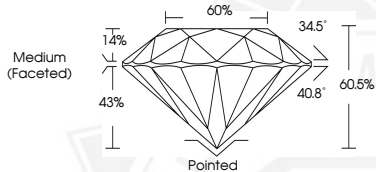
ADDITIONAL GRADING INFORMATION

Polish **EXCELLENT**
 Symmetry **EXCELLENT**
 Fluorescence **NONE**
 Inscription(s) **IGI LG784644765**

Comments: HEARTS & ARROWS
 As Grown - No indication of post-growth treatment.
 This Laboratory Grown Diamond was created by High Pressure High
 Temperature (HPHT) growth process.
 Type II



Sample Image Used



HEARTS & ARROWS



April 17, 2026
 IGI Report Number **LG784644765**
 ROUND BRILLIANT
 LABORATORY GROWN DIAMOND
 5.23 - 5.25 X 3.17 MM
 Carat Weight **0.54 CARAT**
 Color Grade **D**
 Clarity Grade **FLAWLESS**
 Cut Grade **IDEAL**
 Polish **EXCELLENT**
 Symmetry **EXCELLENT**
 Fluorescence **NONE**
 Inscription(s) **IGI LG784644765**

Comments: HEARTS & ARROWS As
 Grown - No indication of post-
 growth treatment. This Laboratory
 Grown Diamond was created by
 High Pressure High Temperature
 (HPHT) growth process. Type II



April 17, 2026
 IGI Report Number **LG784644765**
 ROUND BRILLIANT
 LABORATORY GROWN DIAMOND
 5.23 - 5.25 X 3.17 MM
 Carat Weight **0.54 CARAT**
 Color Grade **D**
 Clarity Grade **FLAWLESS**
 Cut Grade **IDEAL**
 Polish **EXCELLENT**
 Symmetry **EXCELLENT**
 Fluorescence **NONE**
 Inscription(s) **IGI LG784644765**

Comments: HEARTS & ARROWS As
 Grown - No indication of post-
 growth treatment. This Laboratory
 Grown Diamond was created by
 High Pressure High Temperature
 (HPHT) growth process. Type II

THIS DOCUMENT WAS PRODUCED WITH THE FOLLOWING SECURITY MEASURES: SPECIAL DOCUMENT PAPER, INK SCREENS, WATERMARK, BACKGROUND DESIGNS, HOLOGRAM AND OTHER SECURITY FEATURES NOT LISTED AND DO EXCEED DOCUMENT SECURITY INDUSTRY GUIDELINES.

For terms & conditions and to verify this report, please visit www.igi.org