



ELECTRONIC COPY

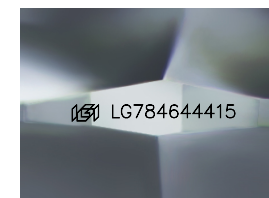
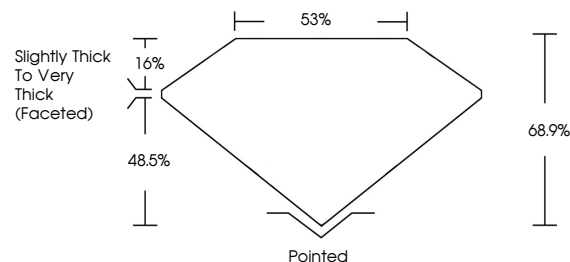
LG784644415
Report verification at igi.org



April 10, 2026
IGI Report Number **LG784644415**
Description **LABORATORY GROWN DIAMOND**
Shape and Cutting Style **CUSHION MODIFIED BRILLIANT**
Measurements **8.60 X 6.69 X 4.61 MM**
GRADING RESULTS
Carat Weight **2.12 CARATS**
Color Grade **D**
Clarity Grade **VVS 1**

April 10, 2026
IGI Report Number **LG784644415**
Description **LABORATORY GROWN DIAMOND**
Shape and Cutting Style **CUSHION MODIFIED BRILLIANT**
Measurements **8.60 X 6.69 X 4.61 MM**

PROPORTIONS

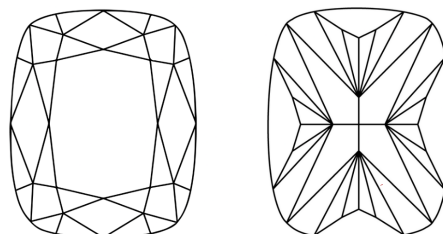


Sample Image Used

GRADING RESULTS

Carat Weight **2.12 CARATS**
Color Grade **D**
Clarity Grade **VVS 1**

CLARITY CHARACTERISTICS



KEY TO SYMBOLS

Red symbols indicate internal characteristics.
Green symbols indicate external characteristics.

ADDITIONAL GRADING INFORMATION

Polish **EXCELLENT**
Symmetry **EXCELLENT**
Fluorescence **NONE**
Inscription(s) **IGI LG784644415**

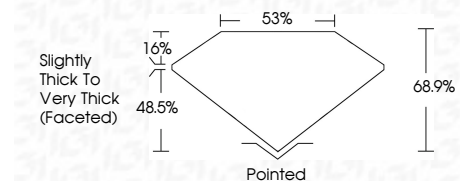
Comments: As Grown - No indication of post-growth treatment.
This Laboratory Grown Diamond was created by High Pressure High Temperature (HPHT) growth process.
Type II

COLOR

D E F G H I J Faint Very Light Light

CLARITY

FL	IF	VVS ¹⁻²	VS ¹⁻²	SI ¹⁻²	I ¹⁻³
Flawless	Internally Flawless	Very Very Slightly Included	Very Slightly Included	Slightly Included	Included



ADDITIONAL GRADING INFORMATION

Polish **EXCELLENT**
Symmetry **EXCELLENT**
Fluorescence **NONE**
Inscription(s) **IGI LG784644415**
Comments: As Grown - No indication of post-growth treatment.
This Laboratory Grown Diamond was created by High Pressure High Temperature (HPHT) growth process.
Type II



IGI



April 10, 2026
IGI Report No **LG784644415**
CUSHION MODIFIED BRILLIANT
8.60 X 6.69 X 4.61 MM
Carat Weight **2.12 CARATS**
Color Grade **D**
Clarity Grade **VVS 1**
Depth **68.9%**
Table **53%**
Girdle **Slightly Thick To Very Thick (Faceted)**
Culet **Pointed**
Polish **EXCELLENT**
Symmetry **EXCELLENT**
Fluorescence **NONE**
Inscription(s) **IGI LG784644415**

Comments: As Grown - No indication of post-growth treatment.
This Laboratory Grown Diamond was created by High Pressure High Temperature (HPHT) growth process.
Type II