



ELECTRONIC COPY

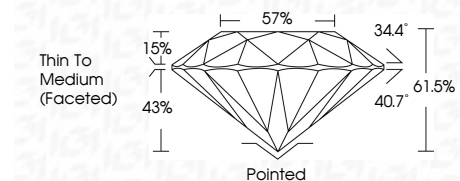
LG784644251
Report verification at igi.org



April 10, 2026
IGI Report Number LG784644251
Description LABORATORY GROWN DIAMOND
Shape and Cutting Style ROUND BRILLIANT
Measurements 9.30 - 9.34 X 5.73 MM

GRADING RESULTS

Carat Weight 3.05 CARATS
Color Grade D
Clarity Grade FLAWLESS
Cut Grade IDEAL

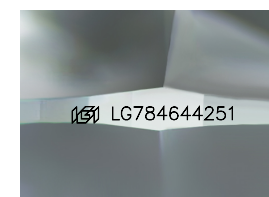


ADDITIONAL GRADING INFORMATION

Polish EXCELLENT
Symmetry EXCELLENT
Fluorescence NONE
Inscription(s) (IGI) LG784644251
Comments: HEARTS & ARROWS
As Grown - No indication of post-growth treatment.
This Laboratory Grown Diamond was created by High Pressure High Temperature (HPHT) growth process.
Type II

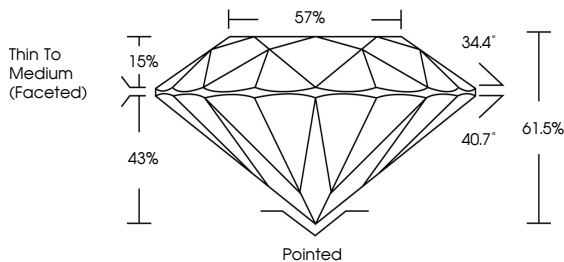


April 10, 2026
IGI Report No LG784644251
ROUND BRILLIANT
3.05 CARATS
D
FLAWLESS
IDEAL
61.5%
57%
Thin To Medium (Faceted)
Pointed
EXCELLENT
EXCELLENT
NONE
(IGI) LG784644251
Comments: HEARTS & ARROWS
As Grown - No indication of post-growth treatment.
This Laboratory Grown Diamond was created by High Pressure High Temperature (HPHT) growth process.
Type II

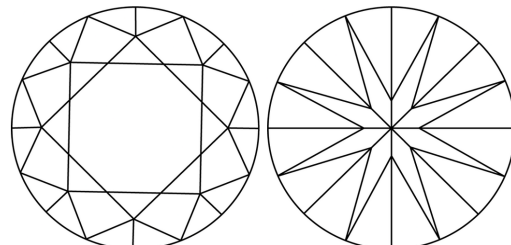


Sample Image Used

PROPORTIONS



CLARITY CHARACTERISTICS



KEY TO SYMBOLS

Red symbols indicate internal characteristics.
Green symbols indicate external characteristics.



COLOR

Table with color grades: D, E, F, G, H, I, J, Faint, Very Light, Light

CLARITY

Table with clarity grades: FL, IF, VS 1-2, VS 1-2, SI 1-2, I 1-3, Flawless, Internally Flawless, Very Very Slightly Included, Very Slightly Included, Slightly Included, Included



April 10, 2026
IGI Report Number LG784644251
Description LABORATORY GROWN DIAMOND
Shape and Cutting Style ROUND BRILLIANT
Measurements 9.30 - 9.34 X 5.73 MM

GRADING RESULTS

Carat Weight 3.05 CARATS
Color Grade D
Clarity Grade FLAWLESS
Cut Grade IDEAL

ADDITIONAL GRADING INFORMATION

Polish EXCELLENT
Symmetry EXCELLENT
Fluorescence NONE
Inscription(s) (IGI) LG784644251

Comments: HEARTS & ARROWS
As Grown - No indication of post-growth treatment.
This Laboratory Grown Diamond was created by High Pressure High Temperature (HPHT) growth process.
Type II