



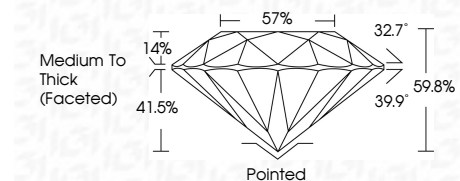
ELECTRONIC COPY

LG784643986 Report verification at igi.org



April 27, 2026 IGI Report Number LG784643986 Description LABORATORY GROWN DIAMOND Shape and Cutting Style ROUND BRILLIANT Measurements 7.32 - 7.37 X 4.39 MM

GRADING RESULTS Carat Weight 1.48 CARAT Color Grade E Clarity Grade VS 1 Cut Grade VERY GOOD



ADDITIONAL GRADING INFORMATION Polish VERY GOOD Symmetry VERY GOOD Fluorescence NONE Inscription(s) LG784643986 Comments: As Grown - No indication of post-growth treatment. This Laboratory Grown Diamond was created by High Pressure High Temperature (HPHT) growth process. Type II



April 27, 2026 IGI Report No LG784643986 ROUND BRILLIANT 7.32 - 7.37 X 4.39 MM 1.48 CARAT E VS 1 VERY GOOD 59.8% 57% Medium To Thick (Faceted) Pointed VERY GOOD VERY GOOD VERY GOOD NONE NONE LG784643986

Comments: As Grown - No indication of post-growth treatment. This Laboratory Grown Diamond was created by High Pressure High Temperature (HPHT) growth process. Type II

LABORATORY GROWN DIAMOND REPORT

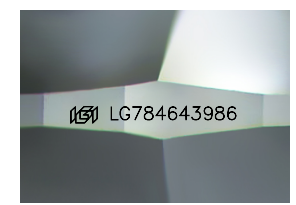
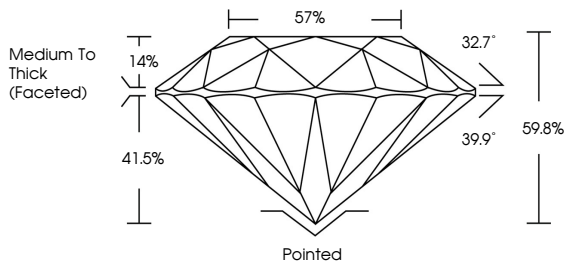
April 27, 2026 IGI Report Number LG784643986 Description LABORATORY GROWN DIAMOND Shape and Cutting Style ROUND BRILLIANT Measurements 7.32 - 7.37 X 4.39 MM

GRADING RESULTS Carat Weight 1.48 CARAT Color Grade E Clarity Grade VS 1 Cut Grade VERY GOOD

ADDITIONAL GRADING INFORMATION Polish VERY GOOD Symmetry VERY GOOD Fluorescence NONE Inscription(s) LG784643986

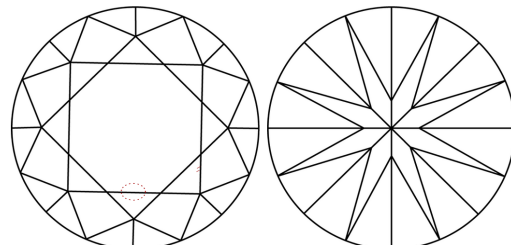
Comments: As Grown - No indication of post-growth treatment. This Laboratory Grown Diamond was created by High Pressure High Temperature (HPHT) growth process. Type II

PROPORTIONS



Sample Image Used

CLARITY CHARACTERISTICS



KEY TO SYMBOLS Red symbols indicate internal characteristics. Green symbols indicate external characteristics.

COLOR

Table with color scale: D, E, F, G, H, I, J, Faint, Very Light, Light

CLARITY

Table with clarity scale: FL, IF, VS 1-2, VS 1-2, SI 1-2, I 1-3, Flawless, Internally Flawless, Very Very Slightly Included, Very Slightly Included, Slightly Included, Included

