



ELECTRONIC COPY

LG784642948
Report verification at igi.org



May 9, 2026

IGI Report Number **LG784642948**

Description **LABORATORY GROWN DIAMOND**

Shape and Cutting Style **PRINCESS CUT**

Measurements **7.01 X 6.90 X 5.00 MM**

GRADING RESULTS

Carat Weight **2.19 CARATS**

Color Grade **D**

Clarity Grade **FLAWLESS**

May 9, 2026

IGI Report Number **LG784642948**

Description **LABORATORY GROWN DIAMOND**

Shape and Cutting Style **PRINCESS CUT**

Measurements **7.01 X 6.90 X 5.00 MM**

GRADING RESULTS

Carat Weight **2.19 CARATS**

Color Grade **D**

Clarity Grade **FLAWLESS**

ADDITIONAL GRADING INFORMATION

Polish **EXCELLENT**

Symmetry **EXCELLENT**

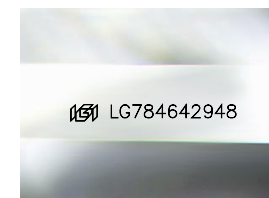
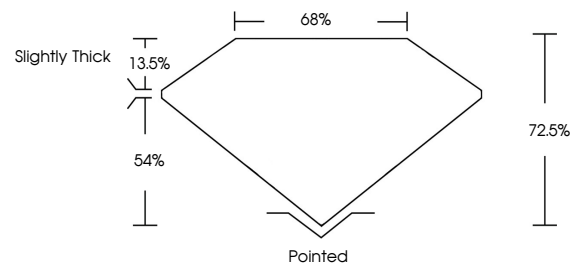
Fluorescence **NONE**

Inscription(s) **IGI LG784642948**

Comments: As Grown - No indication of post-growth treatment.

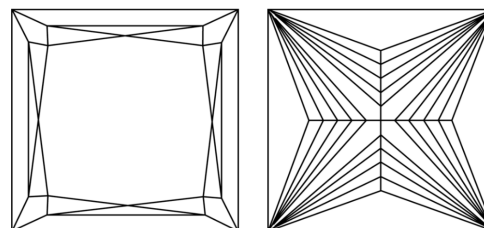
This Laboratory Grown Diamond was created by High Pressure High Temperature (HPHT) growth process. Type II

PROPORTIONS



Sample Image Used

CLARITY CHARACTERISTICS



KEY TO SYMBOLS

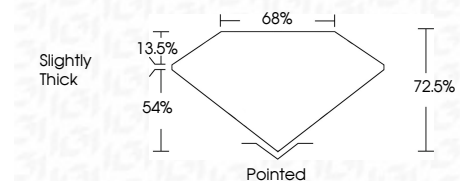
Red symbols indicate internal characteristics.
Green symbols indicate external characteristics.

COLOR

D E F G H I J Faint Very Light Light

CLARITY

FL	IF	VS ¹⁻²	VS ¹⁻²	SI ¹⁻²	I ¹⁻³
Flawless	Internally Flawless	Very Very Slightly Included	Very Slightly Included	Slightly Included	Included



ADDITIONAL GRADING INFORMATION

Polish **EXCELLENT**

Symmetry **EXCELLENT**

Fluorescence **NONE**

Inscription(s) **IGI LG784642948**

Comments: As Grown - No indication of post-growth treatment.

This Laboratory Grown Diamond was created by High Pressure High Temperature (HPHT) growth process. Type II



IGI



May 9, 2026
IGI Report No LG784642948
PRINCESS CUT

2.19 CARATS
D

7.01 X 6.90 X 5.00 MM

Carat Weight
Color Grade
Clarity Grade
Table
Depth
Girdle
Slightly Thick

FLAWLESS
72.05%
65%

Pointed
EXCELLENT
EXCELLENT
NONE
IGI LG784642948

Culet
Polish
Symmetry
Fluorescence
Inscription(s)

Comments: As Grown - No indication of post-growth treatment.
This Laboratory Grown Diamond was created by High Pressure High Temperature (HPHT) growth process. Type II