



ELECTRONIC COPY

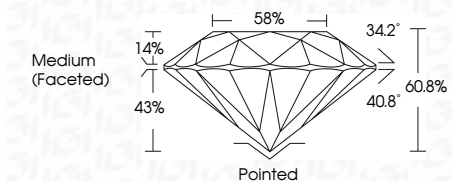
LG784642843 Report verification at igi.org



May 6, 2026 IGI Report Number LG784642843 Description LABORATORY GROWN DIAMOND Shape and Cutting Style ROUND BRILLIANT Measurements 11.06 - 11.11 X 6.74 MM

GRADING RESULTS

Carat Weight 5.06 CARATS Color Grade D Clarity Grade FLAWLESS Cut Grade IDEAL



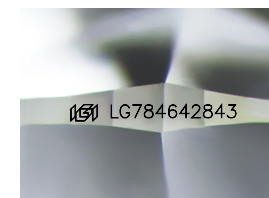
ADDITIONAL GRADING INFORMATION

Polish EXCELLENT Symmetry EXCELLENT Fluorescence NONE Inscription(s) LG784642843 Comments: HEARTS & ARROWS As Grown - No indication of post-growth treatment. This Laboratory Grown Diamond was created by High Pressure High Temperature (HPHT) growth process. Type II



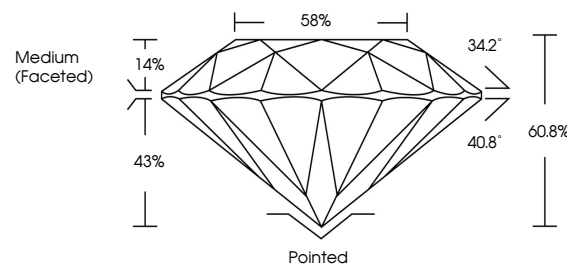
May 6, 2026 IGI Report No LG784642843 ROUND BRILLIANT 5.06 CARATS D FLAWLESS IDEAL 60.8% 58% Medium (Faceted) Pointed EXCELLENT EXCELLENT NONE LG784642843

Comments: HEARTS & ARROWS As Grown - No indication of post-growth treatment. This Laboratory Grown Diamond was created by High Pressure High Temperature (HPHT) growth process. Type II

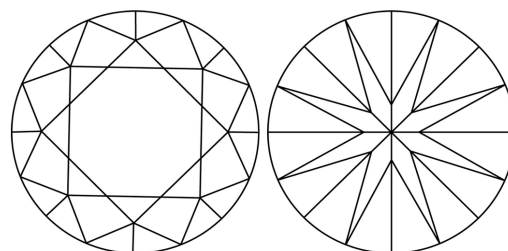


Sample Image Used

PROPORTIONS



CLARITY CHARACTERISTICS



KEY TO SYMBOLS

Red symbols indicate internal characteristics. Green symbols indicate external characteristics.



COLOR

D E F G H I J Faint Very Light Light

CLARITY

FL IF VS 1-2 VS 1-2 SI 1-2 I 1-3 Flawless Internally Flawless Very Very Slightly Included Very Slightly Included Slightly Included Included

