



ELECTRONIC COPY

LG784642810
Report verification at igi.org



May 8, 2026

IGI Report Number **LG784642810**

Description **LABORATORY GROWN DIAMOND**

Shape and Cutting Style **ANTIQUÉ CUSHION CUT**

Measurements **10.72 X 7.70 X 4.84 MM**

GRADING RESULTS

Carat Weight **3.20 CARATS**

Color Grade **D**

Clarity Grade **FLAWLESS**

May 8, 2026

IGI Report Number **LG784642810**

Description **LABORATORY GROWN DIAMOND**

Shape and Cutting Style **ANTIQUÉ CUSHION CUT**

Measurements **10.72 X 7.70 X 4.84 MM**

GRADING RESULTS

Carat Weight **3.20 CARATS**

Color Grade **D**

Clarity Grade **FLAWLESS**

ADDITIONAL GRADING INFORMATION

Polish **EXCELLENT**

Symmetry **EXCELLENT**

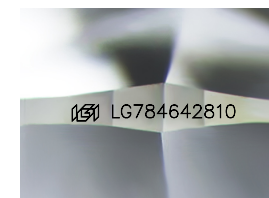
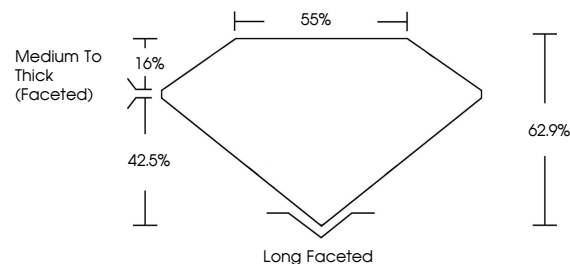
Fluorescence **NONE**

Inscription(s) **IGI LG784642810**

Comments: As Grown - No indication of post-growth treatment.

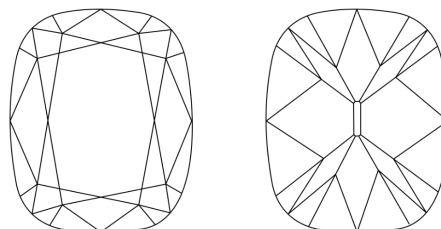
This Laboratory Grown Diamond was created by High Pressure High Temperature (HPHT) growth process. Type II

PROPORTIONS



Sample Image Used

CLARITY CHARACTERISTICS



KEY TO SYMBOLS

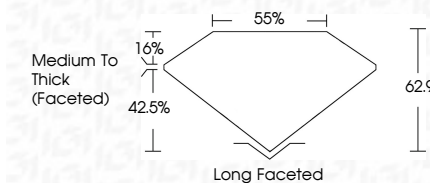
Red symbols indicate internal characteristics.
Green symbols indicate external characteristics.

COLOR

D E F G H I J Faint Very Light Light

CLARITY

FL	IF	VS ¹⁻²	VS ¹⁻²	SI ¹⁻²	I ¹⁻³
Flawless	Internally Flawless	Very Very Slightly Included	Very Slightly Included	Slightly Included	Included



ADDITIONAL GRADING INFORMATION

Polish **EXCELLENT**

Symmetry **EXCELLENT**

Fluorescence **NONE**

Inscription(s) **IGI LG784642810**

Comments: As Grown - No indication of post-growth treatment.

This Laboratory Grown Diamond was created by High Pressure High Temperature (HPHT) growth process. Type II



IGI



May 8, 2026
IGI Report No LG784642810
ANTIQUÉ CUSHION CUT
10.72 X 7.70 X 4.84 MM
Carat Weight 3.20 CARATS
Color Grade D
Clarity Grade FLAWLESS
Depth 62.9%
Table 55%
Girdle Medium To Thick (Faceted)
Culet Long Faceted
Polish EXCELLENT
Symmetry EXCELLENT
Fluorescence NONE
Inscription(s) IGI LG784642810
Comments: As Grown - No indication of post-growth treatment.
This Laboratory Grown Diamond was created by High Pressure High Temperature (HPHT) growth process. Type II