



May 13, 2026

IGI Report Number **LG784642713**

**ROUND BRILLIANT
LABORATORY GROWN DIAMOND
5.24 - 5.28 X 3.22 MM**

| | |
|----------------|------------------------|
| Carat Weight | 0.55 CARAT |
| Color Grade | D |
| Clarity Grade | FLAWLESS |
| Cut Grade | IDEAL |
| Polish | EXCELLENT |
| Symmetry | EXCELLENT |
| Fluorescence | NONE |
| Inscription(s) | IGI LG784642713 |

Comments: HEARTS & ARROWS As Grown - No indication of post-growth treatment. This Laboratory Grown Diamond was created by High Pressure High Temperature (HPHT) growth process. Type II

LABORATORY GROWN DIAMOND REPORT

| | |
|-------------------------|---------------------------------|
| May 13, 2026 | |
| IGI Report Number | LG784642713 |
| Description | LABORATORY GROWN DIAMOND |
| Shape and Cutting Style | ROUND BRILLIANT |
| Measurements | 5.24 - 5.28 X 3.22 MM |

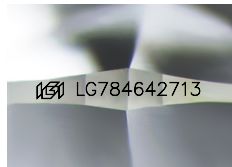
GRADING RESULTS

| | |
|---------------|-------------------|
| Carat Weight | 0.55 CARAT |
| Color Grade | D |
| Clarity Grade | FLAWLESS |
| Cut Grade | IDEAL |

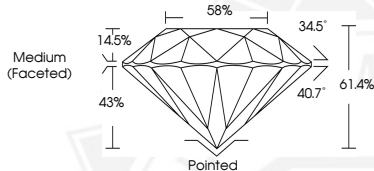
ADDITIONAL GRADING INFORMATION

| | |
|----------------|------------------------|
| Polish | EXCELLENT |
| Symmetry | EXCELLENT |
| Fluorescence | NONE |
| Inscription(s) | IGI LG784642713 |

Comments: HEARTS & ARROWS As Grown - No indication of post-growth treatment. This Laboratory Grown Diamond was created by High Pressure High Temperature (HPHT) growth process. Type II



Sample Image Used



HEARTS & ARROWS



May 13, 2026

IGI Report Number **LG784642713**

**ROUND BRILLIANT
LABORATORY GROWN DIAMOND
5.24 - 5.28 X 3.22 MM**

| | |
|----------------|------------------------|
| Carat Weight | 0.55 CARAT |
| Color Grade | D |
| Clarity Grade | FLAWLESS |
| Cut Grade | IDEAL |
| Polish | EXCELLENT |
| Symmetry | EXCELLENT |
| Fluorescence | NONE |
| Inscription(s) | IGI LG784642713 |

Comments: HEARTS & ARROWS As Grown - No indication of post-growth treatment. This Laboratory Grown Diamond was created by High Pressure High Temperature (HPHT) growth process. Type II

THIS DOCUMENT WAS PRODUCED WITH THE FOLLOWING SECURITY MEASURES: SPECIAL DOCUMENT PAPER, INK SCREENS, WATERMARK, BACKGROUND DESIGNS, HOLOGRAM AND OTHER SECURITY FEATURES NOT LISTED AND DO EXCEED DOCUMENT SECURITY INDUSTRY GUIDELINES.

For terms & conditions and to verify this report, please visit www.igi.org