



ELECTRONIC COPY

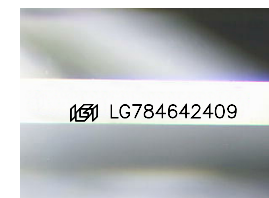
LG784642409
Report verification at igi.org



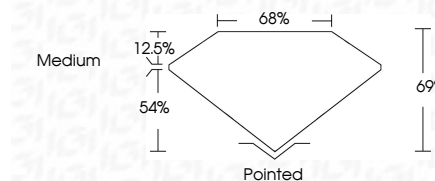
April 30, 2026
IGI Report Number **LG784642409**
Description **LABORATORY GROWN DIAMOND**
Shape and Cutting Style **PRINCESS CUT**
Measurements **7.31 X 7.14 X 4.93 MM**

GRADING RESULTS

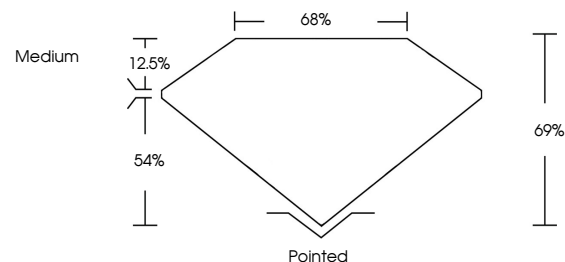
Carat Weight **2.27 CARATS**
Color Grade **D**
Clarity Grade **VVS 2**



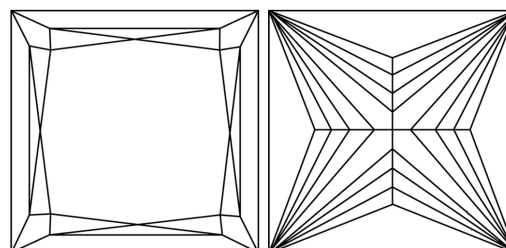
Sample Image Used



PROPORTIONS



CLARITY CHARACTERISTICS



KEY TO SYMBOLS

Red symbols indicate internal characteristics.
Green symbols indicate external characteristics.

COLOR

D E F G H I J Faint Very Light Light

CLARITY

FL	IF	VVS ¹⁻²	VS ¹⁻²	SI ¹⁻²	I ¹⁻³
Flawless	Internally Flawless	Very Very Slightly Included	Very Slightly Included	Slightly Included	Included

ADDITIONAL GRADING INFORMATION

Polish **EXCELLENT**
Symmetry **EXCELLENT**
Fluorescence **NONE**
Inscription(s) **IGI LG784642409**
Comments: As Grown - No indication of post-growth treatment.
This Laboratory Grown Diamond was created by High Pressure High Temperature (HPHT) growth process.
Type II



IGI



April 30, 2026
IGI Report No. LG784642409
PRINCESS CUT
7.31 X 7.14 X 4.93 MM
2.27 CARATS
D
Color Grade
VVS 2
Depth 69%
Table 54%
Girdle
Medium
Pointed
EXCELLENT
EXCELLENT
NONE
IGI LG784642409
Comments: As Grown - No indication of post-growth treatment.
This Laboratory Grown Diamond was created by High Pressure High Temperature (HPHT) growth process.
Type II