



ELECTRONIC COPY

LG784639758
Report verification at igi.org



March 19, 2026
IGI Report Number LG784639758
Description LABORATORY GROWN DIAMOND
Shape and Cutting Style HEXAGONAL MODIFIED BRILLIANT
Measurements 12.98 X 7.06 X 4.68 MM
GRADING RESULTS
Carat Weight 2.59 CARATS
Color Grade F
Clarity Grade VVS 2

LABORATORY GROWN DIAMOND REPORT

March 19, 2026
IGI Report Number LG784639758
Description LABORATORY GROWN DIAMOND
Shape and Cutting Style HEXAGONAL MODIFIED BRILLIANT
Measurements 12.98 X 7.06 X 4.68 MM

GRADING RESULTS

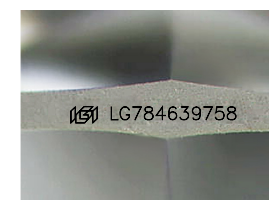
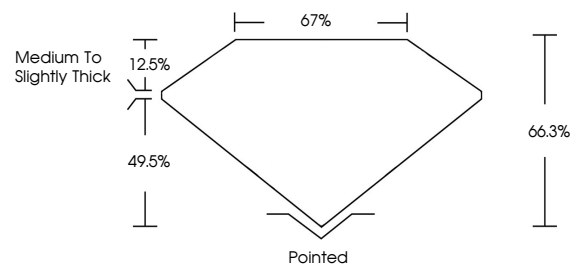
Carat Weight 2.59 CARATS
Color Grade F
Clarity Grade VVS 2

ADDITIONAL GRADING INFORMATION

Polish EXCELLENT
Symmetry EXCELLENT
Fluorescence NONE
Inscription(s) LG784639758

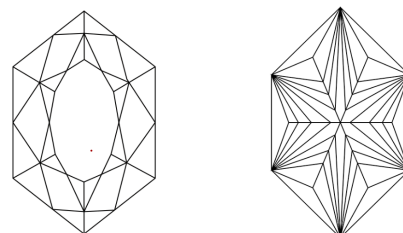
Comments: This Laboratory Grown Diamond was created by Chemical Vapor Deposition (CVD) growth process. Type IIa

PROPORTIONS



Sample Image Used

CLARITY CHARACTERISTICS



KEY TO SYMBOLS

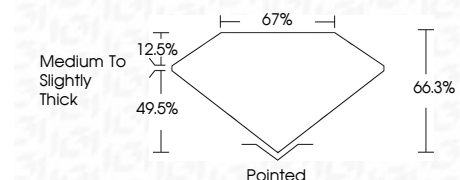
Red symbols indicate internal characteristics.
Green symbols indicate external characteristics.

COLOR

D E F G H I J Faint Very Light Light

CLARITY

FL IF VVS 1-2 VS 1-2 SI 1-2 I 1-3
Flawless Internally Flawless Very Very Slightly Included Very Slightly Included Slightly Included Included



ADDITIONAL GRADING INFORMATION

Polish EXCELLENT
Symmetry EXCELLENT
Fluorescence NONE
Inscription(s) LG784639758
Comments: This Laboratory Grown Diamond was created by Chemical Vapor Deposition (CVD) growth process. Type IIa



March 19, 2026
IGI Report No LG784639758
HEXAGONAL MODIFIED BRILLIANT
2.59 CARATS F
Carat Weight 2.59 CARATS
Color Grade F
Clarity Grade VVS 2
Depth 66.3%
Table 67%
Girdle Medium to Slightly Thick
Culet Pointed
Polish EXCELLENT
Symmetry EXCELLENT
Fluorescence NONE
Inscription(s) LG784639758
Comments: This Laboratory Grown Diamond was created by Chemical Vapor Deposition (CVD) growth process. Type IIa