



**ELECTRONIC COPY**

LG784634445  
Report verification at igi.org



March 24, 2026

IGI Report Number **LG784634445**

Description **LABORATORY GROWN DIAMOND**

Shape and Cutting Style **MARQUISE BRILLIANT**

Measurements **12.51 X 6.94 X 4.37 MM**

**GRADING RESULTS**

Carat Weight **2.27 CARATS**

Color Grade **FANCY VIVID PINK**

Clarity Grade **VS 2**

March 24, 2026  
IGI Report Number **LG784634445**  
Description **LABORATORY GROWN DIAMOND**  
Shape and Cutting Style **MARQUISE BRILLIANT**  
Measurements **12.51 X 6.94 X 4.37 MM**

**GRADING RESULTS**

Carat Weight **2.27 CARATS**

Color Grade **FANCY VIVID PINK**

Clarity Grade **VS 2**

**ADDITIONAL GRADING INFORMATION**

Polish **EXCELLENT**

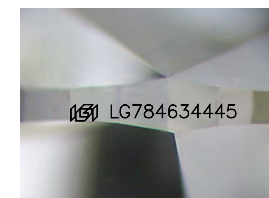
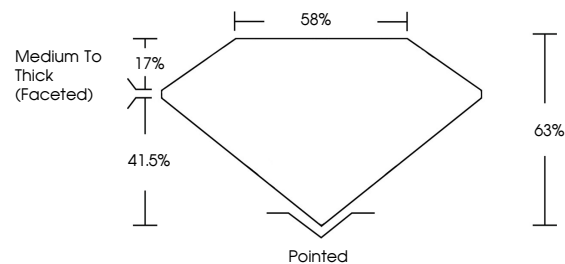
Symmetry **EXCELLENT**

Fluorescence **SLIGHT**

Inscription(s) **LG784634445**

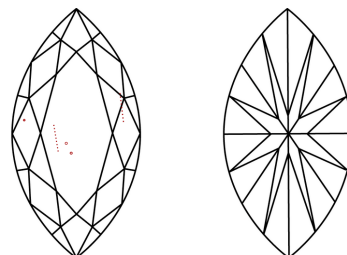
Comments: This Laboratory Grown Diamond was created by Chemical Vapor Deposition (CVD) growth process. Indications of post-growth treatment.

**PROPORTIONS**



Sample Image Used

**CLARITY CHARACTERISTICS**



**KEY TO SYMBOLS**

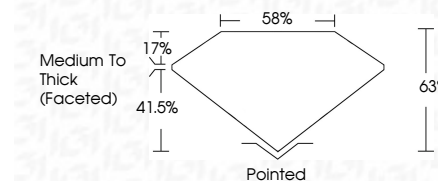
Red symbols indicate internal characteristics.  
Green symbols indicate external characteristics.

**COLOR**

D E F G H I J Faint Very Light Light

**CLARITY**

FL	IF	VS <sup>1-2</sup>	VS <sup>1-2</sup>	SI <sup>1-2</sup>	I <sup>1-3</sup>
Flawless	Internally Flawless	Very Very Slightly Included	Very Slightly Included	Slightly Included	Included



**ADDITIONAL GRADING INFORMATION**

Polish **EXCELLENT**

Symmetry **EXCELLENT**

Fluorescence **SLIGHT**

Inscription(s) **LG784634445**

Comments: This Laboratory Grown Diamond was created by Chemical Vapor Deposition (CVD) growth process. Indications of post-growth treatment.



March 24, 2026  
IGI Report No LG784634445  
MARQUISE BRILLIANT

2.27 CARATS  
FANCY VIVID PINK

12.51 X 6.94 X 4.37 MM

Color Grade VS 2  
Depth 63%  
Table 41.5%  
Girdle Medium To Thick (Faceted)

Culet Pointed  
Polish EXCELLENT  
Symmetry EXCELLENT  
Fluorescence SLIGHT  
Inscription(s) LG784634445

Comments: This Laboratory Grown Diamond was created by Chemical Vapor Deposition (CVD) growth process. Indications of post-growth treatment.