



**LABORATORY GROWN DIAMOND REPORT**

April 8, 2026  
 IGI Report Number **LG784634043**  
 Description **LABORATORY GROWN DIAMOND**  
 Shape and Cutting Style **OVAL BRILLIANT**  
 Measurements **7.25 X 5.08 X 3.20 MM**

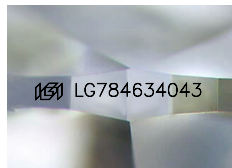
**GRADING RESULTS**

Carat Weight **0.76 CARAT**  
 Color Grade **D**  
 Clarity Grade **VS 1**

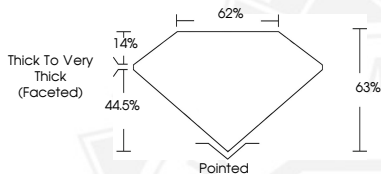
**ADDITIONAL GRADING INFORMATION**

Polish **VERY GOOD**  
 Symmetry **GOOD**  
 Fluorescence **NONE**  
 Inscription(s) **IGI LG784634043**

Comments: This Laboratory Grown Diamond was created by  
 Chemical Vapor Deposition (CVD) growth process.  
 Type IIa



Sample Image Used



April 8, 2026  
 IGI Report Number **LG784634043**  
**OVAL BRILLIANT**  
**LABORATORY GROWN DIAMOND**  
**7.25 X 5.08 X 3.20 MM**  
 Carat Weight **0.76 CARAT**  
 Color Grade **D**  
 Clarity Grade **VS 1**  
 Polish **VERY GOOD**  
 Symmetry **GOOD**  
 Fluorescence **NONE**  
 Inscription(s) **IGI LG784634043**

Comments: This Laboratory Grown  
 Diamond was created by  
 Chemical Vapor Deposition (CVD)  
 growth process. Type IIa



April 8, 2026  
 IGI Report Number **LG784634043**  
**OVAL BRILLIANT**  
**LABORATORY GROWN DIAMOND**  
**7.25 X 5.08 X 3.20 MM**  
 Carat Weight **0.76 CARAT**  
 Color Grade **D**  
 Clarity Grade **VS 1**  
 Polish **VERY GOOD**  
 Symmetry **GOOD**  
 Fluorescence **NONE**  
 Inscription(s) **IGI LG784634043**

Comments: This Laboratory Grown  
 Diamond was created by  
 Chemical Vapor Deposition (CVD)  
 growth process. Type IIa



THIS DOCUMENT WAS PRODUCED WITH THE FOLLOWING SECURITY MEASURES: SPECIAL DOCUMENT PAPER, INK SCREENS, WATERMARK, BACKGROUND DESIGNS, HOLOGRAM AND OTHER SECURITY FEATURES NOT LISTED AND DO EXCEED DOCUMENT SECURITY INDUSTRY GUIDELINES.