



ELECTRONIC COPY

LG784633991
Report verification at igi.org



April 7, 2026
IGI Report Number **LG784633991**
Description **LABORATORY GROWN DIAMOND**
Shape and Cutting Style **CUSHION MODIFIED BRILLIANT**
Measurements **11.50 X 8.23 X 5.68 MM**
GRADING RESULTS
Carat Weight **5.04 CARATS**
Color Grade **FANCY VIVID YELLOW**
Clarity Grade **VS 1**

April 7, 2026
IGI Report Number **LG784633991**
Description **LABORATORY GROWN DIAMOND**
Shape and Cutting Style **CUSHION MODIFIED BRILLIANT**
Measurements **11.50 X 8.23 X 5.68 MM**

GRADING RESULTS

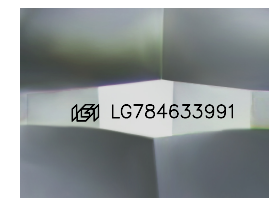
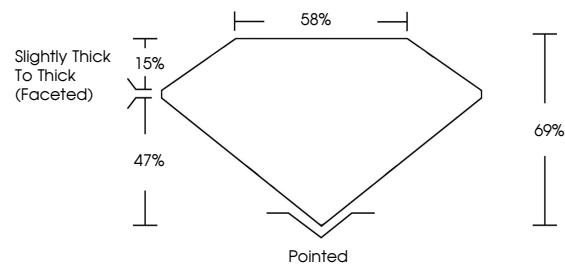
Carat Weight **5.04 CARATS**
Color Grade **FANCY VIVID YELLOW**
Clarity Grade **VS 1**

ADDITIONAL GRADING INFORMATION

Polish **EXCELLENT**
Symmetry **EXCELLENT**
Fluorescence **NONE**
Inscription(s) **IGI LG784633991**

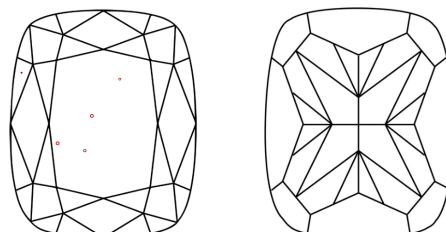
Comments: This Laboratory Grown Diamond was created by Chemical Vapor Deposition (CVD) growth process.

PROPORTIONS



Sample Image Used

CLARITY CHARACTERISTICS



KEY TO SYMBOLS

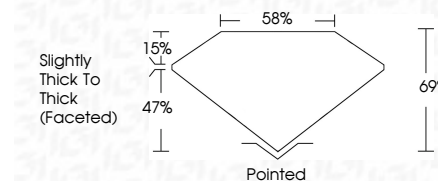
Red symbols indicate internal characteristics.
Green symbols indicate external characteristics.

COLOR

D E F G H I J Faint Very Light Light

CLARITY

| FL | IF | VS ¹⁻² | VS ¹⁻² | SI ¹⁻² | I ¹⁻³ |
|----------|---------------------|-----------------------------|------------------------|-------------------|------------------|
| Flawless | Internally Flawless | Very Very Slightly Included | Very Slightly Included | Slightly Included | Included |



ADDITIONAL GRADING INFORMATION

Polish **EXCELLENT**
Symmetry **EXCELLENT**
Fluorescence **NONE**
Inscription(s) **IGI LG784633991**
Comments: This Laboratory Grown Diamond was created by Chemical Vapor Deposition (CVD) growth process.



IGI



April 7, 2026
IGI Report No LG784633991
CUSHION MODIFIED BRILLIANT
11.50 X 8.23 X 5.68 MM
5.04 CARATS
FANCY VIVID YELLOW
VS 1
69%
85%
Slightly Thick To Thick (Faceted)
Pointed
EXCELLENT
EXCELLENT
NONE
IGI LG784633991
Comments: This Laboratory Grown Diamond was created by Chemical Vapor Deposition (CVD) growth process.