



LABORATORY GROWN DIAMOND REPORT

April 2, 2026
 IGI Report Number **LG784633932**
 Description **LABORATORY GROWN DIAMOND**
 Shape and Cutting Style **OVAL BRILLIANT**
 Measurements **6.80 X 4.70 X 2.95 MM**

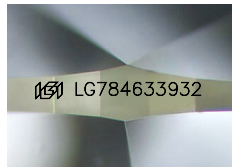
GRADING RESULTS

Carat Weight **0.61 CARAT**
 Color Grade **E**
 Clarity Grade **VS 1**

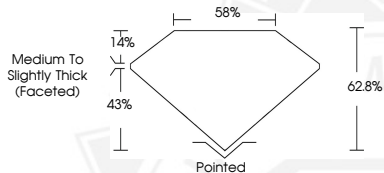
ADDITIONAL GRADING INFORMATION

Polish **VERY GOOD**
 Symmetry **VERY GOOD**
 Fluorescence **NONE**
 Inscription(s) **IGI LG784633932**

Comments: This Laboratory Grown Diamond was created by
 Chemical Vapor Deposition (CVD) growth process.
 Type IIa



Sample Image Used



April 2, 2026
 IGI Report Number **LG784633932**
OVAL BRILLIANT
LABORATORY GROWN DIAMOND
6.80 X 4.70 X 2.95 MM
 Carat Weight **0.61 CARAT**
 Color Grade **E**
 Clarity Grade **VS 1**
 Polish **VERY GOOD**
 Symmetry **VERY GOOD**
 Fluorescence **NONE**
 Inscription(s) **IGI LG784633932**

Comments: This Laboratory Grown
 Diamond was created by
 Chemical Vapor Deposition (CVD)
 growth process. Type IIa



April 2, 2026
 IGI Report Number **LG784633932**
OVAL BRILLIANT
LABORATORY GROWN DIAMOND
6.80 X 4.70 X 2.95 MM
 Carat Weight **0.61 CARAT**
 Color Grade **E**
 Clarity Grade **VS 1**
 Polish **VERY GOOD**
 Symmetry **VERY GOOD**
 Fluorescence **NONE**
 Inscription(s) **IGI LG784633932**

Comments: This Laboratory Grown
 Diamond was created by
 Chemical Vapor Deposition (CVD)
 growth process. Type IIa



THIS DOCUMENT WAS PRODUCED WITH THE FOLLOWING SECURITY MEASURES: SPECIAL DOCUMENT PAPER, INK SCREENS, WATERMARK, BACKGROUND DESIGNS, HOLOGRAM AND OTHER SECURITY FEATURES NOT LISTED AND DO EXCEED DOCUMENT SECURITY INDUSTRY GUIDELINES.