



LABORATORY GROWN DIAMOND REPORT

April 1, 2026
 IGI Report Number **LG784633917**
 Description **LABORATORY GROWN DIAMOND**
 Shape and Cutting Style **OVAL BRILLIANT**
 Measurements **6.61 X 4.61 X 3.01 MM**

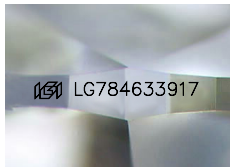
GRADING RESULTS

Carat Weight **0.62 CARAT**
 Color Grade **FANCY INTENSE YELLOW**
 Clarity Grade **VS 2**

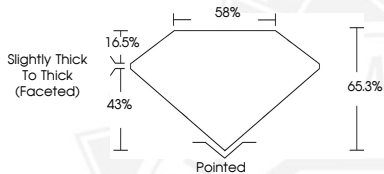
ADDITIONAL GRADING INFORMATION

Polish **EXCELLENT**
 Symmetry **EXCELLENT**
 Fluorescence **NONE**
 Inscription(s) **IGI LG784633917**

Comments: This Laboratory Grown Diamond was created by Chemical Vapor Deposition (CVD) growth process.



Sample Image Used



April 1, 2026
 IGI Report Number **LG784633917**
 OVAL BRILLIANT
 LABORATORY GROWN DIAMOND
 6.61 X 4.61 X 3.01 MM
 Carat Weight **0.62 CARAT**
 Color Grade **FANCY INTENSE YELLOW**
 Clarity Grade **VS 2**
 Polish **EXCELLENT**
 Symmetry **EXCELLENT**
 Fluorescence **NONE**
 Inscription(s) **IGI LG784633917**
 Comments: This Laboratory Grown Diamond was created by Chemical Vapor Deposition (CVD) growth process.



April 1, 2026
 IGI Report Number **LG784633917**
 OVAL BRILLIANT
 LABORATORY GROWN DIAMOND
 6.61 X 4.61 X 3.01 MM
 Carat Weight **0.62 CARAT**
 Color Grade **FANCY INTENSE YELLOW**
 Clarity Grade **VS 2**
 Polish **EXCELLENT**
 Symmetry **EXCELLENT**
 Fluorescence **NONE**
 Inscription(s) **IGI LG784633917**
 Comments: This Laboratory Grown Diamond was created by Chemical Vapor Deposition (CVD) growth process.

THIS DOCUMENT WAS PRODUCED WITH THE FOLLOWING SECURITY MEASURES: SPECIAL DOCUMENT PAPER, INK SCREENS, WATERMARK, BACKGROUND DESIGNS, HOLOGRAM AND OTHER SECURITY FEATURES NOT LISTED AND DO EXCEED DOCUMENT SECURITY INDUSTRY GUIDELINES.