



ELECTRONIC COPY

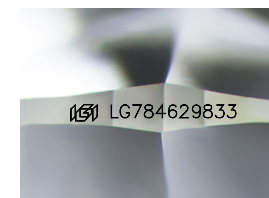
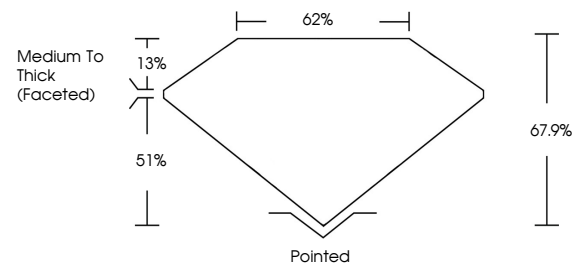
LG784629833
Report verification at igi.org



March 23, 2026
IGI Report Number **LG784629833**
Description **LABORATORY GROWN DIAMOND**
Shape and Cutting Style **SQUARE CUSHION MODIFIED BRILLIANT**
Measurements **8.00 X 7.83 X 5.32 MM**
GRADING RESULTS
Carat Weight **2.55 CARATS**
Color Grade **D**
Clarity Grade **VS 1**

March 23, 2026
IGI Report Number **LG784629833**
Description **LABORATORY GROWN DIAMOND**
Shape and Cutting Style **SQUARE CUSHION MODIFIED BRILLIANT**
Measurements **8.00 X 7.83 X 5.32 MM**

PROPORTIONS

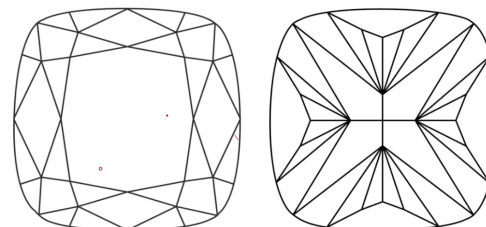


Sample Image Used

GRADING RESULTS

Carat Weight **2.55 CARATS**
Color Grade **D**
Clarity Grade **VS 1**

CLARITY CHARACTERISTICS



KEY TO SYMBOLS

Red symbols indicate internal characteristics.
Green symbols indicate external characteristics.

ADDITIONAL GRADING INFORMATION

Polish **EXCELLENT**
Symmetry **EXCELLENT**
Fluorescence **NONE**
Inscription(s) **IGI LG784629833**

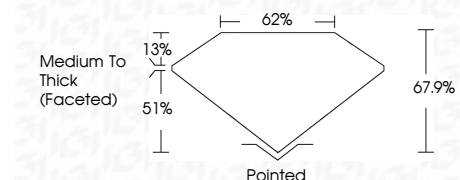
Comments: This Laboratory Grown Diamond was created by Chemical Vapor Deposition (CVD) growth process.
Type IIa

COLOR

D E F G H I J Faint Very Light Light

CLARITY

FL	IF	VS ¹⁻²	VS ¹⁻²	SI ¹⁻²	I ¹⁻³
Flawless	Internally Flawless	Very Very Slightly Included	Very Slightly Included	Slightly Included	Included



ADDITIONAL GRADING INFORMATION

Polish **EXCELLENT**
Symmetry **EXCELLENT**
Fluorescence **NONE**
Inscription(s) **IGI LG784629833**
Comments: This Laboratory Grown Diamond was created by Chemical Vapor Deposition (CVD) growth process.
Type IIa



IGI



March 23, 2026
IGI Report No **LG784629833**
SQUARE CUSHION MODIFIED BRILLIANT
8.00 X 7.83 X 5.32 MM
Carat Weight **2.55 CARATS**
Color Grade **D**
Clarity Grade **VS 1**
Depth **67.9%**
Table **62%**
Girdle **Medium To Thick (Faceted)**
Culet **Pointed**
Polish **EXCELLENT**
Symmetry **EXCELLENT**
Fluorescence **NONE**
Inscription(s) **IGI LG784629833**
Comments: This Laboratory Grown Diamond was created by Chemical Vapor Deposition (CVD) growth process.
Type IIa