



March 24, 2026

**IGI Report Number** LG784629047  
**ROUND BRILLIANT**  
**LABORATORY GROWN DIAMOND**  
**4.63 - 4.65 X 2.84 MM**

**Carat Weight** 0.37 CARAT  
**Color Grade** FANCY VIVID PINK  
**Clarity Grade** VVS 2  
**Cut Grade** IDEAL  
**Polish** VERY GOOD  
**Symmetry** VERY GOOD  
**Fluorescence** SLIGHT  
**Inscription(s)** IGI LG784629047

Comments: This Laboratory Grown Diamond was created by High Pressure High Temperature (HPHT) growth process. Indications of post-growth treatment.

**LABORATORY GROWN DIAMOND REPORT**

March 24, 2026  
IGI Report Number **LG784629047**  
Description **LABORATORY GROWN DIAMOND**  
Shape and Cutting Style **ROUND BRILLIANT**  
Measurements **4.63 - 4.65 X 2.84 MM**

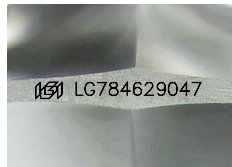
**GRADING RESULTS**

**Carat Weight** 0.37 CARAT  
**Color Grade** FANCY VIVID PINK  
**Clarity Grade** VVS 2  
**Cut Grade** IDEAL

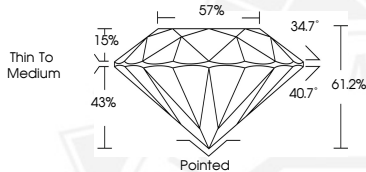
**ADDITIONAL GRADING INFORMATION**

**Polish** VERY GOOD  
**Symmetry** VERY GOOD  
**Fluorescence** SLIGHT  
**Inscription(s)** IGI LG784629047

Comments: This Laboratory Grown Diamond was created by High Pressure High Temperature (HPHT) growth process. Indications of post-growth treatment.



Sample Image Used



March 24, 2026

**IGI Report Number** LG784629047  
**ROUND BRILLIANT**  
**LABORATORY GROWN DIAMOND**  
**4.63 - 4.65 X 2.84 MM**

**Carat Weight** 0.37 CARAT  
**Color Grade** FANCY VIVID PINK  
**Clarity Grade** VVS 2  
**Cut Grade** IDEAL  
**Polish** VERY GOOD  
**Symmetry** VERY GOOD  
**Fluorescence** SLIGHT  
**Inscription(s)** IGI LG784629047

Comments: This Laboratory Grown Diamond was created by High Pressure High Temperature (HPHT) growth process. Indications of post-growth treatment.



THIS DOCUMENT WAS PRODUCED WITH THE FOLLOWING SECURITY MEASURES: SPECIAL DOCUMENT PAPER, INK SCREENS, WATERMARK, BACKGROUND DESIGNS, HOLOGRAM AND OTHER SECURITY FEATURES NOT LISTED AND DO EXCEED DOCUMENT SECURITY INDUSTRY GUIDELINES.