



March 24, 2026

IGI Report Number LG784629039
HEART MODIFIED BRILLIANT
LABORATORY GROWN DIAMOND
4.97 X 5.25 X 2.69 MM

Carat Weight 0.51 CARAT
Color Grade FANCY VIVID PINK
Clarity Grade VS 1
Polish VERY GOOD
Symmetry VERY GOOD
Fluorescence SLIGHT
Inscription(s) IGI LG784629039

Comments: This Laboratory Grown Diamond was created by Chemical Vapor Deposition (CVD) growth process. Indications of post-growth treatment.

LABORATORY GROWN DIAMOND REPORT

March 24, 2026
IGI Report Number **LG784629039**
Description **LABORATORY GROWN DIAMOND**
Shape and Cutting Style **HEART MODIFIED BRILLIANT**
Measurements **4.97 X 5.25 X 2.69 MM**

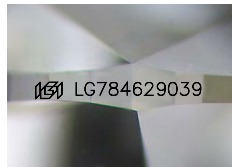
GRADING RESULTS

Carat Weight 0.51 CARAT
Color Grade FANCY VIVID PINK
Clarity Grade VS 1

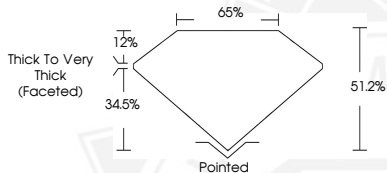
ADDITIONAL GRADING INFORMATION

Polish VERY GOOD
Symmetry VERY GOOD
Fluorescence SLIGHT
Inscription(s) IGI LG784629039

Comments: This Laboratory Grown Diamond was created by Chemical Vapor Deposition (CVD) growth process. Indications of post-growth treatment.



Sample Image Used



March 24, 2026

IGI Report Number LG784629039
HEART MODIFIED BRILLIANT
LABORATORY GROWN DIAMOND
4.97 X 5.25 X 2.69 MM

Carat Weight 0.51 CARAT
Color Grade FANCY VIVID PINK
Clarity Grade VS 1
Polish VERY GOOD
Symmetry VERY GOOD
Fluorescence SLIGHT
Inscription(s) IGI LG784629039

Comments: This Laboratory Grown Diamond was created by Chemical Vapor Deposition (CVD) growth process. Indications of post-growth treatment.



THIS DOCUMENT WAS PRODUCED WITH THE FOLLOWING SECURITY MEASURES: SPECIAL DOCUMENT PAPER, INK SCREENS, WATERMARK, BACKGROUND DESIGNS, HOLOGRAM AND OTHER SECURITY FEATURES NOT LISTED AND DO EXCEED DOCUMENT SECURITY INDUSTRY GUIDELINES.