



March 24, 2026

IGI Report Number **LG784629037**

**HEART BRILLIANT  
LABORATORY GROWN DIAMOND  
4.90 X 5.49 X 3.02 MM**

Carat Weight **0.60 CARAT**  
Color Grade **FANCY VIVID PINK**  
Clarity Grade **VS 1**  
Polish **GOOD**  
Symmetry **VERY GOOD**  
Fluorescence **SLIGHT**  
Inscription(s) **IGI LG784629037**

Comments: This Laboratory Grown Diamond was created by Chemical Vapor Deposition (CVD) growth process. Indications of post-growth treatment.

**LABORATORY GROWN DIAMOND REPORT**

March 24, 2026

IGI Report Number

**LG784629037**

Description

**LABORATORY GROWN DIAMOND**

Shape and Cutting Style

**HEART BRILLIANT**

Measurements

**4.90 X 5.49 X 3.02 MM**

**GRADING RESULTS**

Carat Weight

**0.60 CARAT**

Color Grade

**FANCY VIVID PINK**

Clarity Grade

**VS 1**

**ADDITIONAL GRADING INFORMATION**

Polish

**GOOD**

Symmetry

**VERY GOOD**

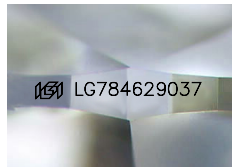
Fluorescence

**SLIGHT**

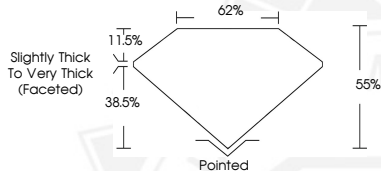
Inscription(s)

**IGI LG784629037**

Comments: This Laboratory Grown Diamond was created by Chemical Vapor Deposition (CVD) growth process. Indications of post-growth treatment.



Sample Image Used



March 24, 2026

IGI Report Number **LG784629037**

**HEART BRILLIANT  
LABORATORY GROWN DIAMOND  
4.90 X 5.49 X 3.02 MM**

Carat Weight **0.60 CARAT**  
Color Grade **FANCY VIVID PINK**  
Clarity Grade **VS 1**  
Polish **GOOD**  
Symmetry **VERY GOOD**  
Fluorescence **SLIGHT**  
Inscription(s) **IGI LG784629037**

Comments: This Laboratory Grown Diamond was created by Chemical Vapor Deposition (CVD) growth process. Indications of post-growth treatment.



THIS DOCUMENT WAS PRODUCED WITH THE FOLLOWING SECURITY MEASURES: SPECIAL DOCUMENT PAPER, INK SCREENS, WATERMARK, BACKGROUND DESIGNS, HOLOGRAM AND OTHER SECURITY FEATURES NOT LISTED AND DO EXCEED DOCUMENT SECURITY INDUSTRY GUIDELINES.