



ELECTRONIC COPY

LG784626334 Report verification at igi.org



March 21, 2026 IGI Report Number LG784626334 Description LABORATORY GROWN DIAMOND Shape and Cutting Style CUT CORNERED RECTANGULAR MODIFIED BRILLIANT

Measurements 11.87 X 8.31 X 5.69 MM

GRADING RESULTS

Carat Weight 5.07 CARATS Color Grade F Clarity Grade VS 1

March 21, 2026 IGI Report Number LG784626334 Description LABORATORY GROWN DIAMOND Shape and Cutting Style CUT CORNERED RECTANGULAR MODIFIED BRILLIANT Measurements 11.87 X 8.31 X 5.69 MM

GRADING RESULTS

Carat Weight 5.07 CARATS Color Grade F Clarity Grade VS 1

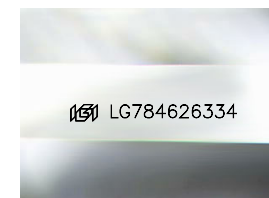
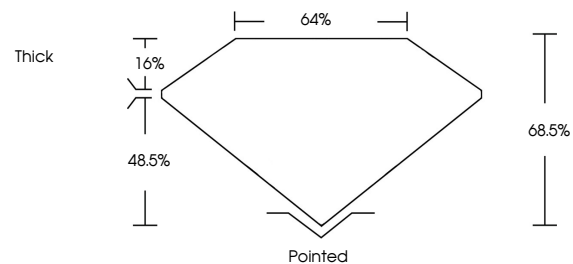
ADDITIONAL GRADING INFORMATION

Polish EXCELLENT Symmetry EXCELLENT Fluorescence NONE

Inscription(s) LG784626334

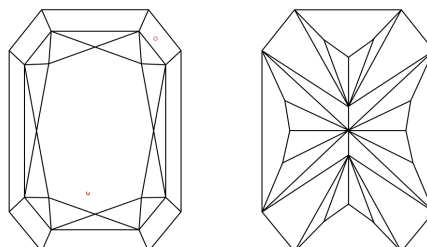
Comments: This Laboratory Grown Diamond was created by Chemical Vapor Deposition (CVD) growth process. Type IIa

PROPORTIONS



Sample Image Used

CLARITY CHARACTERISTICS



KEY TO SYMBOLS

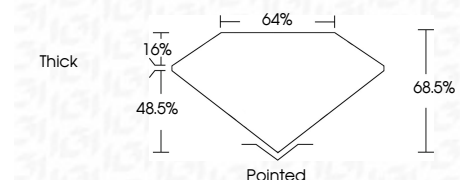
Red symbols indicate internal characteristics. Green symbols indicate external characteristics.

COLOR

D E F G H I J Faint Very Light Light

CLARITY

FL IF VS 1-2 VS 2-3 SI 1-2 SI 2-3 I 1-3 Flawless Internally Flawless Very Very Slightly Included Very Slightly Included Slightly Included Included



ADDITIONAL GRADING INFORMATION

Polish EXCELLENT Symmetry EXCELLENT Fluorescence NONE Inscription(s) LG784626334

Comments: This Laboratory Grown Diamond was created by Chemical Vapor Deposition (CVD) growth process. Type IIa



IGI



March 21, 2026 IGI Report No LG784626334 CUT CORNERED RECT. MODIFIED BRILLIANT 5.07 CARATS F VS 1 68.5% 48.5% Thick Pointed EXCELLENT EXCELLENT NONE LG784626334

Comments: This Laboratory Grown Diamond was created by Chemical Vapor Deposition (CVD) growth process. Type IIa