



**INTERNATIONAL
GEMOLOGICAL
INSTITUTE**

LABORATORY GROWN DIAMOND REPORT

March 17, 2026
 IGI Report Number **LG784624038**
 Description **LABORATORY GROWN DIAMOND**
 Shape and Cutting Style **ROUND BRILLIANT**
 Measurements **5.01 - 5.05 X 2.96 MM**

GRADING RESULTS

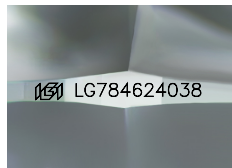
Carat Weight **0.45 CARAT**
 Color Grade **D**
 Clarity Grade **VVS 1**
 Cut Grade **IDEAL**

ADDITIONAL GRADING INFORMATION

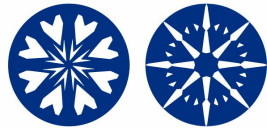
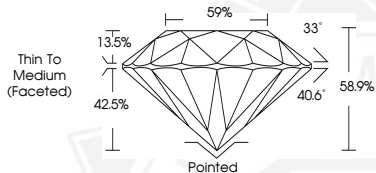
Polish **EXCELLENT**
 Symmetry **EXCELLENT**
 Fluorescence **NONE**
 Inscription(s) **IGI LG784624038**

Comments: HEARTS & ARROWS
 As Grown - No indication of post-growth treatment.
 This Laboratory Grown Diamond was created by High Pressure High
 Temperature (HPHT) growth process.
 Type II

ELECTRONIC COPY



Sample Image Used



HEARTS & ARROWS



March 17, 2026
 IGI Report Number **LG784624038**
ROUND BRILLIANT
LABORATORY GROWN DIAMOND
5.01 - 5.05 X 2.96 MM
 Carat Weight **0.45 CARAT**
 Color Grade **D**
 Clarity Grade **VVS 1**
 Cut Grade **IDEAL**
 Polish **EXCELLENT**
 Symmetry **EXCELLENT**
 Fluorescence **NONE**
 Inscription(s) **IGI LG784624038**

Comments: HEARTS & ARROWS As
 Grown - No indication of post-
 growth treatment. This Laboratory
 Grown Diamond was created by
 High Pressure High Temperature
 (HPHT) growth process. Type II



March 17, 2026
 IGI Report Number **LG784624038**
ROUND BRILLIANT
LABORATORY GROWN DIAMOND
5.01 - 5.05 X 2.96 MM
 Carat Weight **0.45 CARAT**
 Color Grade **D**
 Clarity Grade **VVS 1**
 Cut Grade **IDEAL**
 Polish **EXCELLENT**
 Symmetry **EXCELLENT**
 Fluorescence **NONE**
 Inscription(s) **IGI LG784624038**

Comments: HEARTS & ARROWS As
 Grown - No indication of post-
 growth treatment. This Laboratory
 Grown Diamond was created by
 High Pressure High Temperature
 (HPHT) growth process. Type II

THIS DOCUMENT WAS PRODUCED WITH THE FOLLOWING SECURITY MEASURES: SPECIAL DOCUMENT PAPER, INK SCREENS, WATERMARK, BACKGROUND DESIGNS, HOLOGRAM AND OTHER SECURITY FEATURES NOT LISTED AND DO EXCEED DOCUMENT SECURITY INDUSTRY GUIDELINES.

For terms & conditions and to verify this report, please visit www.igi.org