



ELECTRONIC COPY

LG784623656
Report verification at igi.org



March 17, 2026

IGI Report Number **LG784623656**

Description **LABORATORY GROWN DIAMOND**

Shape and Cutting Style **PEAR BRILLIANT**

Measurements **10.21 X 6.26 X 3.91 MM**

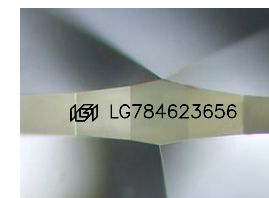
GRADING RESULTS

Carat Weight **1.44 CARAT**

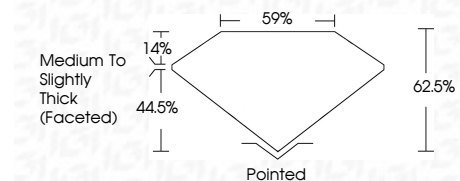
Color Grade **D**

Clarity Grade **VVS 2**

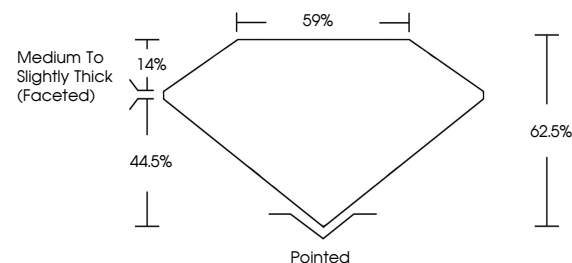
Cut Grade **EXCELLENT**



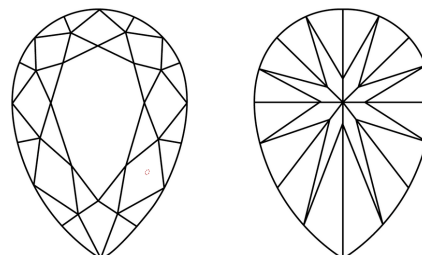
Sample Image Used



PROPORTIONS



CLARITY CHARACTERISTICS



KEY TO SYMBOLS

Red symbols indicate internal characteristics.
Green symbols indicate external characteristics.

COLOR

D E F G H I J Faint Very Light Light

CLARITY

FL	IF	VVS ¹⁻²	VS ¹⁻²	SI ¹⁻²	I ¹⁻³
Flawless	Internally Flawless	Very Very Slightly Included	Very Slightly Included	Slightly Included	Included

ADDITIONAL GRADING INFORMATION

Polish **EXCELLENT**

Symmetry **EXCELLENT**

Fluorescence **NONE**

Inscription(s) **IGI LG784623656**

Comments: As Grown - No indication of post-growth treatment.

This Laboratory Grown Diamond was created by High Pressure High Temperature (HPHT) growth process. Type II



IGI



March 17, 2026
IGI Report No LG784623656
PEAR BRILLIANT

1.44 CARAT
Carat Weight
Color Grade D
Clarity Grade VVS 2
Depth 62.5%
Table 14%
Girdle 59%
Medium To Slightly Thick (Faceted)

Pointed
Culet EXCELLENT
Polish EXCELLENT
Symmetry EXCELLENT
Fluorescence NONE
Inscription(s) IGI LG784623656

Comments: As Grown - No indication of post-growth treatment.
This Laboratory Grown Diamond was created by High Pressure High Temperature (HPHT) growth process. Type II