



ELECTRONIC COPY

LG784621385
Report verification at igi.org



April 4, 2026
IGI Report Number **LG784621385**
Description **LABORATORY GROWN DIAMOND**
Shape and Cutting Style **ROUND BRILLIANT**
Measurements **7.43 - 7.47 X 4.35 MM**
GRADING RESULTS
Carat Weight **1.50 CARAT**
Color Grade **LIGHT YELLOWISH BROWN**
Clarity Grade **VS 1**
Cut Grade **VERY GOOD**

April 4, 2026
IGI Report Number **LG784621385**
Description **LABORATORY GROWN DIAMOND**
Shape and Cutting Style **ROUND BRILLIANT**
Measurements **7.43 - 7.47 X 4.35 MM**

GRADING RESULTS

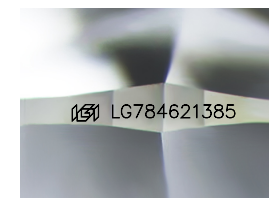
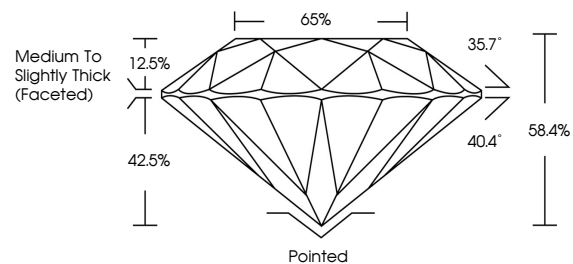
Carat Weight **1.50 CARAT**
Color Grade **LIGHT YELLOWISH BROWN**
Clarity Grade **VS 1**
Cut Grade **VERY GOOD**

ADDITIONAL GRADING INFORMATION

Polish **EXCELLENT**
Symmetry **EXCELLENT**
Fluorescence **VERY SLIGHT**
Inscription(s) **LG784621385**

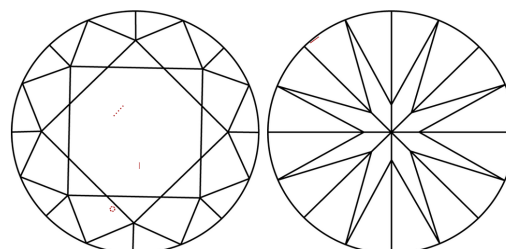
Comments: This Laboratory Grown Diamond was created by Chemical Vapor Deposition (CVD) growth process.

PROPORTIONS



Sample Image Used

CLARITY CHARACTERISTICS



KEY TO SYMBOLS

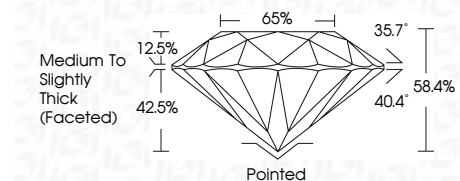
Red symbols indicate internal characteristics.
Green symbols indicate external characteristics.

COLOR

D E F G H I J Faint Very Light Light

CLARITY

FL	IF	VS ¹⁻²	VS ¹⁻²	SI ¹⁻²	I ¹⁻³
Flawless	Internally Flawless	Very Very Slightly Included	Very Slightly Included	Slightly Included	Included



ADDITIONAL GRADING INFORMATION

Polish **EXCELLENT**
Symmetry **EXCELLENT**
Fluorescence **VERY SLIGHT**
Inscription(s) **LG784621385**
Comments: This Laboratory Grown Diamond was created by Chemical Vapor Deposition (CVD) growth process.



April 4, 2026
IGI Report No LG784621385
ROUND BRILLIANT
1.50 CARAT
Carat Weight
Color Grade **LIGHT YELLOWISH BROWN**
Clarity Grade **VS 1**
Cut Grade **VERY GOOD**
Depth **58.4%**
Table **65%**
Girdle **Medium To Slightly Thick (Faceted)**
Culet **Pointed**
Polish **EXCELLENT**
Symmetry **EXCELLENT**
Fluorescence **VERY SLIGHT**
Inscription(s) LG784621385
Comments: This Laboratory Grown Diamond was created by Chemical Vapor Deposition (CVD) growth process.