



**ELECTRONIC COPY**

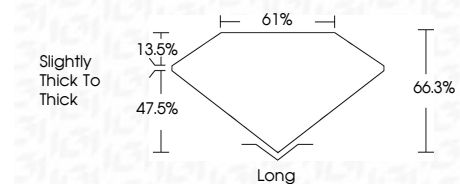
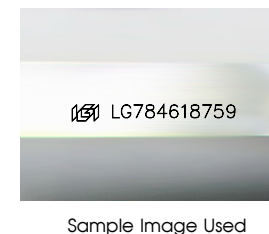
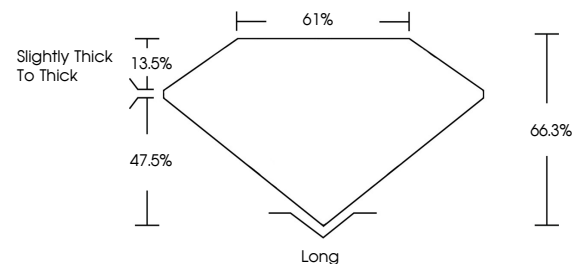
LG784618759  
Report verification at igi.org



March 23, 2026  
IGI Report Number **LG784618759**  
Description **LABORATORY GROWN DIAMOND**  
Shape and Cutting Style **EMERALD CUT**  
Measurements **11.18 X 7.30 X 4.84 MM**  
**GRADING RESULTS**  
Carat Weight **4.25 CARATS**  
Color Grade **D**  
Clarity Grade **VVS 2**

March 23, 2026  
IGI Report Number **LG784618759**  
Description **LABORATORY GROWN DIAMOND**  
Shape and Cutting Style **EMERALD CUT**  
Measurements **11.18 X 7.30 X 4.84 MM**

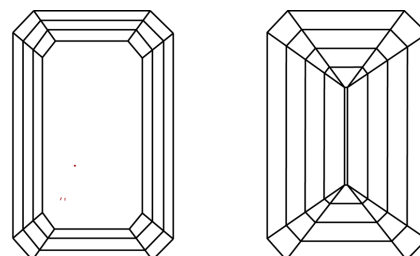
**PROPORTIONS**



**GRADING RESULTS**

Carat Weight **4.25 CARATS**  
Color Grade **D**  
Clarity Grade **VVS 2**

**CLARITY CHARACTERISTICS**



**COLOR**

D E F G H I J Faint Very Light Light

**CLARITY**

FL	IF	VVS <sup>1-2</sup>	VS <sup>1-2</sup>	SI <sup>1-2</sup>	I <sup>1-3</sup>
Flawless	Internally Flawless	Very Very Slightly Included	Very Slightly Included	Slightly Included	Included

**KEY TO SYMBOLS**

Red symbols indicate internal characteristics.  
Green symbols indicate external characteristics.

**ADDITIONAL GRADING INFORMATION**

Polish **EXCELLENT**  
Symmetry **EXCELLENT**  
Fluorescence **NONE**  
Inscription(s) **IGI LG784618759**  
Comments: This Laboratory Grown Diamond was created by Chemical Vapor Deposition (CVD) growth process.  
Type IIa

**ADDITIONAL GRADING INFORMATION**

Polish **EXCELLENT**  
Symmetry **EXCELLENT**  
Fluorescence **NONE**  
Inscription(s) **IGI LG784618759**

Comments: This Laboratory Grown Diamond was created by Chemical Vapor Deposition (CVD) growth process.  
Type IIa



**IGI**



March 23, 2026  
IGI Report No **LG784618759**  
**EMERALD CUT**  
**11.18 X 7.30 X 4.84 MM**  
Carat Weight **4.25 CARATS**  
Color Grade **D**  
Clarity Grade **VVS 2**  
Depth **66.3%**  
Table **61%**  
Girdle **Slightly thick to thick**  
Culet **Long**  
Polish **EXCELLENT**  
Symmetry **EXCELLENT**  
Fluorescence **NONE**  
Inscription(s) **IGI LG784618759**  
Comments: This Laboratory Grown Diamond was created by Chemical Vapor Deposition (CVD) growth process.  
Type IIa