



ELECTRONIC COPY

LG784618351
Report verification at igi.org



March 24, 2026
IGI Report Number **LG784618351**
Description **LABORATORY GROWN DIAMOND**
Shape and Cutting Style **MODIFIED RECTANGULAR
CUSHION MIXED CUT**
Measurements **11.17 X 6.56 X 4.49 MM**
GRADING RESULTS
Carat Weight **3.09 CARATS**
Color Grade **F**
Clarity Grade **VS 1**

March 24, 2026
IGI Report Number **LG784618351**
Description **LABORATORY GROWN DIAMOND**
Shape and Cutting Style **MODIFIED RECTANGULAR
CUSHION MIXED CUT**
Measurements **11.17 X 6.56 X 4.49 MM**

GRADING RESULTS

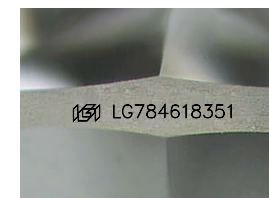
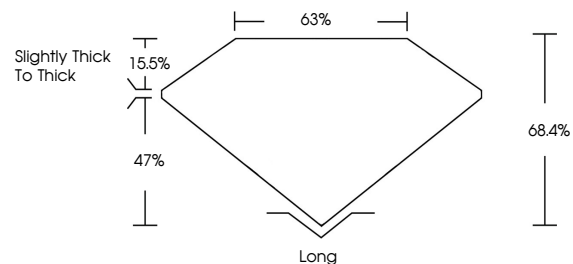
Carat Weight **3.09 CARATS**
Color Grade **F**
Clarity Grade **VS 1**

ADDITIONAL GRADING INFORMATION

Polish **EXCELLENT**
Symmetry **EXCELLENT**
Fluorescence **NONE**
Inscription(s) **IGI LG784618351**

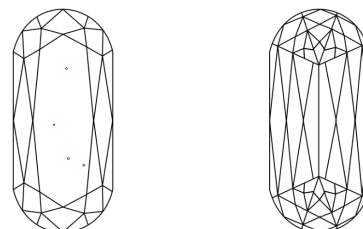
Comments: This Laboratory Grown Diamond was created by Chemical Vapor Deposition (CVD) growth process.
Type IIa

PROPORTIONS



Sample Image Used

CLARITY CHARACTERISTICS



KEY TO SYMBOLS

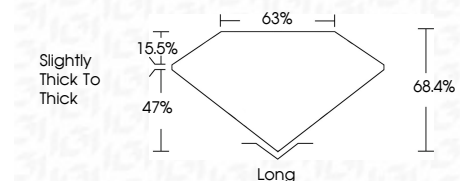
Red symbols indicate internal characteristics.
Green symbols indicate external characteristics.

COLOR

D E F G H I J Faint Very Light Light

CLARITY

FL	IF	VS ¹⁻²	VS ¹⁻²	SI ¹⁻²	I ¹⁻³
Flawless	Internally Flawless	Very Very Slightly Included	Very Slightly Included	Slightly Included	Included



ADDITIONAL GRADING INFORMATION

Polish **EXCELLENT**
Symmetry **EXCELLENT**
Fluorescence **NONE**
Inscription(s) **IGI LG784618351**
Comments: This Laboratory Grown Diamond was created by Chemical Vapor Deposition (CVD) growth process.
Type IIa



March 24, 2026
IGI Report No LG784618351
MODIFIED RECTANGULAR CUSHION MIXED CUT
11.17 X 6.56 X 4.49 MM
Carat Weight **3.09 CARATS**
Color Grade **F**
Clarity Grade **VS 1**
Depth **68.4%**
Table **63%**
Girdle **Slightly thick to Thick**
Culet **Long**
Polish **EXCELLENT**
Symmetry **EXCELLENT**
Fluorescence **NONE**
Inscription(s) **IGI LG784618351**
Comments: This Laboratory Grown Diamond was created by Chemical Vapor Deposition (CVD) growth process.
Type IIa