



ELECTRONIC COPY

LG784617540
Report verification at igi.org



March 18, 2026

IGI Report Number **LG784617540**

Description **LABORATORY GROWN DIAMOND**

Shape and Cutting Style **ROUND BRILLIANT**

Measurements **7.38 - 7.42 X 4.41 MM**

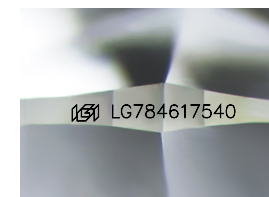
GRADING RESULTS

Carat Weight **1.48 CARAT**

Color Grade **E**

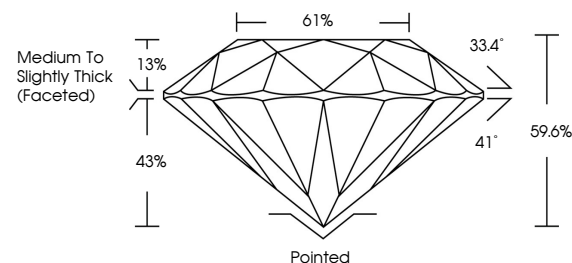
Clarity Grade **VVS 2**

Cut Grade **EXCELLENT**

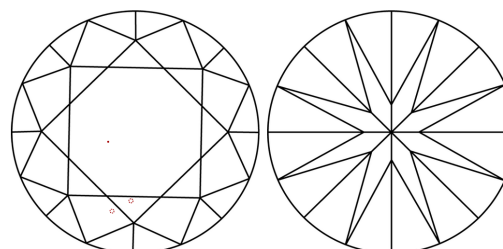


Sample Image Used

PROPORTIONS



CLARITY CHARACTERISTICS



KEY TO SYMBOLS

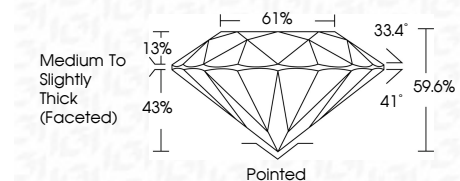
Red symbols indicate internal characteristics.
Green symbols indicate external characteristics.

COLOR

D E F G H I J Faint Very Light Light

CLARITY

FL	IF	VVS ¹⁻²	VS ¹⁻²	SI ¹⁻²	I ¹⁻³
Flawless	Internally Flawless	Very Very Slightly Included	Very Slightly Included	Slightly Included	Included



ADDITIONAL GRADING INFORMATION

Polish **EXCELLENT**

Symmetry **EXCELLENT**

Fluorescence **NONE**

Inscription(s) **IGI LG784617540**

Comments: This Laboratory Grown Diamond was created by Chemical Vapor Deposition (CVD) growth process. Type IIa



IGI



March 18, 2026
IGI Report No LG784617540
ROUND BRILLIANT

1.48 CARAT
E
EXCELLENT
VVS 2
EXCELLENT
EXCELLENT
EXCELLENT
NONE
IGI LG784617540

7.38 - 7.42 X 4.41 MM
1.48 CARAT
E
EXCELLENT
VVS 2
EXCELLENT
EXCELLENT
EXCELLENT
NONE
IGI LG784617540

Medium To Slightly Thick (Faceted)
Pointed
EXCELLENT
EXCELLENT
EXCELLENT
NONE
IGI LG784617540

Cutler
Polish
Symmetry
Fluorescence
Inscription(s)

Comments: This Laboratory Grown Diamond was created by Chemical Vapor Deposition (CVD) growth process. Type IIa