



ELECTRONIC COPY

LG784610969 Report verification at igi.org



March 19, 2026 IGI Report Number LG784610969 Description LABORATORY GROWN DIAMOND Shape and Cutting Style ROUND BRILLIANT Measurements 10.22 - 10.26 X 6.27 MM GRADING RESULTS Carat Weight 4.03 CARATS Color Grade E Clarity Grade VVS 2 Cut Grade IDEAL

March 19, 2026 IGI Report Number LG784610969 Description LABORATORY GROWN DIAMOND Shape and Cutting Style ROUND BRILLIANT Measurements 10.22 - 10.26 X 6.27 MM

GRADING RESULTS

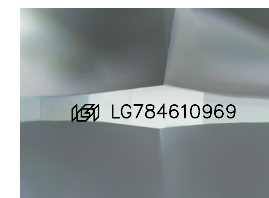
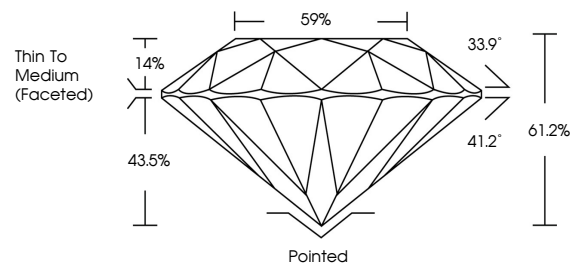
Carat Weight 4.03 CARATS Color Grade E Clarity Grade VVS 2 Cut Grade IDEAL

ADDITIONAL GRADING INFORMATION

Polish EXCELLENT Symmetry EXCELLENT Fluorescence NONE Inscription(s) IGI LG784610969

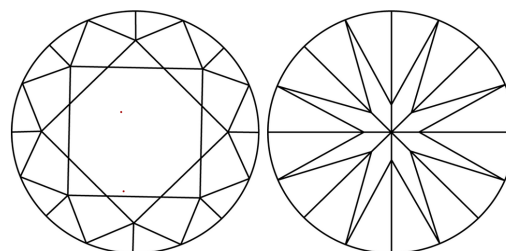
Comments: This Laboratory Grown Diamond was created by Chemical Vapor Deposition (CVD) growth process. Type IIa

PROPORTIONS



Sample Image Used

CLARITY CHARACTERISTICS



KEY TO SYMBOLS

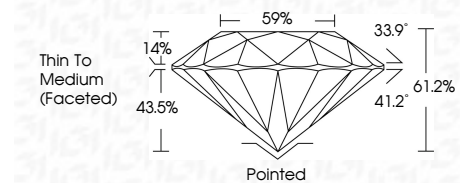
Red symbols indicate internal characteristics. Green symbols indicate external characteristics.

COLOR

D E F G H I J Faint Very Light Light

CLARITY

FL IF VVS 1-2 VS 1-2 SI 1-2 I 1-3 Flawless Internally Flawless Very Very Slightly Included Very Slightly Included Slightly Included Included



ADDITIONAL GRADING INFORMATION

Polish EXCELLENT Symmetry EXCELLENT Fluorescence NONE Inscription(s) IGI LG784610969 Comments: This Laboratory Grown Diamond was created by Chemical Vapor Deposition (CVD) growth process. Type IIa



March 19, 2026 IGI Report No LG784610969 ROUND BRILLIANT 4.03 CARATS E VVS 2 IDEAL 61.2% 59% Thin To Medium (Faceted) Pointed EXCELLENT EXCELLENT NONE IGI LG784610969 Comments: This Laboratory Grown Diamond was created by Chemical Vapor Deposition (CVD) growth process. Type IIa