



ELECTRONIC COPY

LG784608904
Report verification at igi.org



March 23, 2026
IGI Report Number **LG784608904**

Description **LABORATORY GROWN DIAMOND**

Shape and Cutting Style **OCTAGONAL STEP CUT**

Measurements **10.21 X 10.29 X 5.99 MM**

GRADING RESULTS

Carat Weight **4.30 CARATS**

Color Grade **FANCY GREENISH BLUE**

Clarity Grade **VVS 2**

March 23, 2026
IGI Report Number **LG784608904**
Description **LABORATORY GROWN DIAMOND**
Shape and Cutting Style **OCTAGONAL STEP CUT**
Measurements **10.21 X 10.29 X 5.99 MM**

GRADING RESULTS

Carat Weight **4.30 CARATS**

Color Grade **FANCY GREENISH BLUE**

Clarity Grade **VVS 2**

ADDITIONAL GRADING INFORMATION

Polish **EXCELLENT**

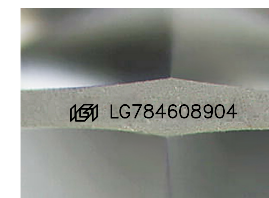
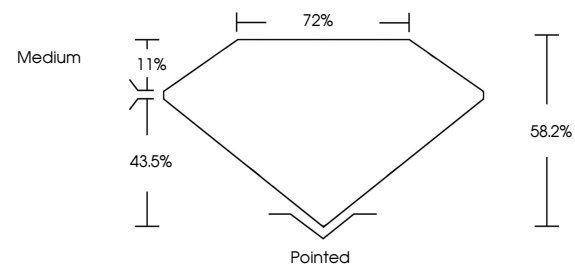
Symmetry **EXCELLENT**

Fluorescence **NONE**

Inscription(s) **LG784608904**

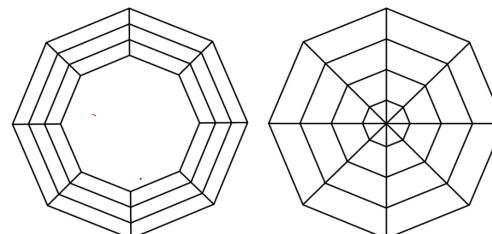
Comments: This Laboratory Grown Diamond was created by Chemical Vapor Deposition (CVD) growth process.
Indications of post-growth treatment.

PROPORTIONS



Sample Image Used

CLARITY CHARACTERISTICS



KEY TO SYMBOLS

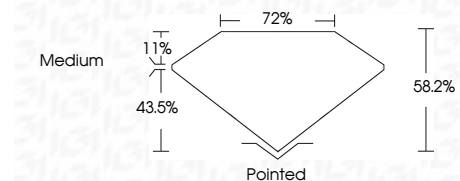
Red symbols indicate internal characteristics.
Green symbols indicate external characteristics.

COLOR

D E F G H I J Faint Very Light Light

CLARITY

FL	IF	VVS ¹⁻²	VS ¹⁻²	SI ¹⁻²	I ¹⁻³
Flawless	Internally Flawless	Very Very Slightly Included	Very Slightly Included	Slightly Included	Included



ADDITIONAL GRADING INFORMATION

Polish **EXCELLENT**

Symmetry **EXCELLENT**

Fluorescence **NONE**

Inscription(s) **LG784608904**

Comments: This Laboratory Grown Diamond was created by Chemical Vapor Deposition (CVD) growth process.
Indications of post-growth treatment.



March 23, 2026	IGI Report No LG784608904	4.30 CARATS	FANCY GREENISH BLUE	VVS 2	58.2%	72%	Medium	Pointed	EXCELLENT	EXCELLENT	NONE	LG784608904
OCTAGONAL STEP CUT	10.21 X 10.29 X 5.99 MM	Color Grade	Clarity Grade	Depth	Table	Graile	Culet	Polish	Symmetry	Fluorescence	Inscription(s)	

Comments: This Laboratory Grown Diamond was created by Chemical Vapor Deposition (CVD) growth process.
Indications of post-growth treatment.