



**ELECTRONIC COPY**

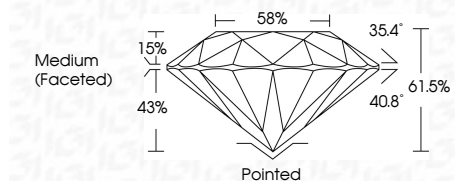
LG784604643  
Report verification at igi.org



April 17, 2026  
IGI Report Number **LG784604643**  
Description **LABORATORY GROWN DIAMOND**  
Shape and Cutting Style **ROUND BRILLIANT**  
Measurements **9.53 - 9.57 X 5.87 MM**

**GRADING RESULTS**

Carat Weight **3.30 CARATS**  
Color Grade **D**  
Clarity Grade **FLAWLESS**  
Cut Grade **IDEAL**



**ADDITIONAL GRADING INFORMATION**

Polish **EXCELLENT**  
Symmetry **EXCELLENT**  
Fluorescence **NONE**  
Inscription(s) **IGI LG784604643**  
Comments: As Grown - No indication of post-growth treatment.  
This Laboratory Grown Diamond was created by High Pressure High Temperature (HPHT) growth process.  
Type II



April 17, 2026  
IGI Report No LG784604643  
**ROUND BRILLIANT**  
9.53 - 9.57 X 5.87 MM  
3.30 CARATS  
Color Grade **D**  
Clarity Grade **FLAWLESS**  
Cut Grade **IDEAL**  
Depth **61.5%**  
Table **15%**  
Girdle **Medium (Faceted)**  
Culet **Pointed**  
Polish **EXCELLENT**  
Symmetry **EXCELLENT**  
Fluorescence **NONE**  
Inscriptions(s) **IGI LG784604643**  
Comments: As Grown - No indication of post-growth treatment.  
This Laboratory Grown Diamond was created by High Pressure High Temperature (HPHT) growth process.  
Type II

April 17, 2026  
IGI Report Number **LG784604643**  
Description **LABORATORY GROWN DIAMOND**  
Shape and Cutting Style **ROUND BRILLIANT**  
Measurements **9.53 - 9.57 X 5.87 MM**

**GRADING RESULTS**

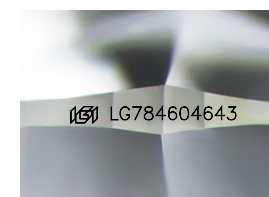
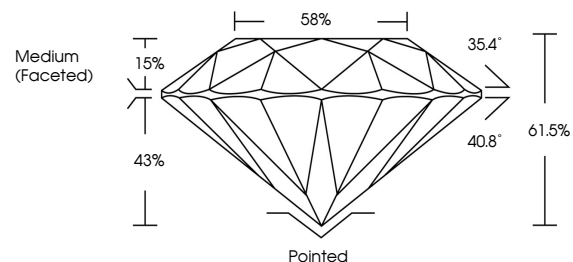
Carat Weight **3.30 CARATS**  
Color Grade **D**  
Clarity Grade **FLAWLESS**  
Cut Grade **IDEAL**

**ADDITIONAL GRADING INFORMATION**

Polish **EXCELLENT**  
Symmetry **EXCELLENT**  
Fluorescence **NONE**  
Inscription(s) **IGI LG784604643**

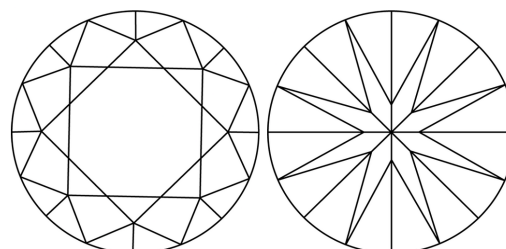
Comments: As Grown - No indication of post-growth treatment.  
This Laboratory Grown Diamond was created by High Pressure High Temperature (HPHT) growth process.  
Type II

**PROPORTIONS**



Sample Image Used

**CLARITY CHARACTERISTICS**



**KEY TO SYMBOLS**

Red symbols indicate internal characteristics.  
Green symbols indicate external characteristics.

**COLOR**

D E F G H I J Faint Very Light Light

**CLARITY**

FL	IF	VS <sup>1-2</sup>	VS <sup>1-2</sup>	SI <sup>1-2</sup>	I <sup>1-3</sup>
Flawless	Internally Flawless	Very Very Slightly Included	Very Slightly Included	Slightly Included	Included

