



**ELECTRONIC COPY**

LG784603775  
Report verification at igi.org



March 24, 2026  
IGI Report Number **LG784603775**  
Description **LABORATORY GROWN DIAMOND**  
Shape and Cutting Style **MODIFIED OCTAGON STEP CUT**  
Measurements **12.08 X 6.00 X 2.44 MM**  
**GRADING RESULTS**  
Carat Weight **1.40 CARAT**  
Color Grade **FANCY YELLOW**  
Clarity Grade **VVS 2**

**LABORATORY GROWN DIAMOND REPORT**

March 24, 2026  
IGI Report Number **LG784603775**  
Description **LABORATORY GROWN DIAMOND**  
Shape and Cutting Style **MODIFIED OCTAGON STEP CUT**  
Measurements **12.08 X 6.00 X 2.44 MM**

**GRADING RESULTS**

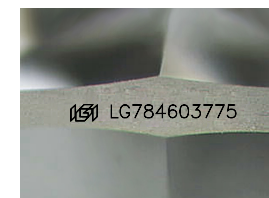
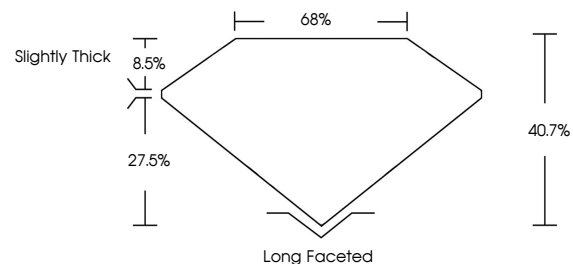
Carat Weight **1.40 CARAT**  
Color Grade **FANCY YELLOW**  
Clarity Grade **VVS 2**

**ADDITIONAL GRADING INFORMATION**

Polish **EXCELLENT**  
Symmetry **EXCELLENT**  
Fluorescence **NONE**  
Inscription(s) **IGI LG784603775**

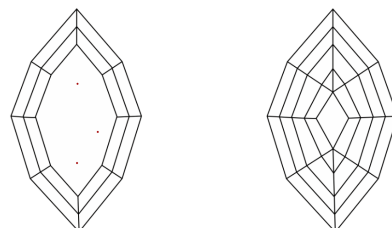
Comments: This Laboratory Grown Diamond was created by Chemical Vapor Deposition (CVD) growth process.

**PROPORTIONS**



Sample Image Used

**CLARITY CHARACTERISTICS**



**KEY TO SYMBOLS**

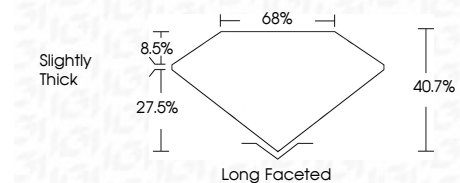
Red symbols indicate internal characteristics.  
Green symbols indicate external characteristics.

**COLOR**

D E F G H I J Faint Very Light Light

**CLARITY**

FL	IF	VVS <sup>1-2</sup>	VS <sup>1-2</sup>	SI <sup>1-2</sup>	I <sup>1-3</sup>
Flawless	Internally Flawless	Very Very Slightly Included	Very Slightly Included	Slightly Included	Included



**ADDITIONAL GRADING INFORMATION**

Polish **EXCELLENT**  
Symmetry **EXCELLENT**  
Fluorescence **NONE**  
Inscription(s) **IGI LG784603775**  
Comments: This Laboratory Grown Diamond was created by Chemical Vapor Deposition (CVD) growth process.



**IGI**



March 24, 2026  
IGI Report No LG784603775  
MODIFIED OCTAGON STEP CUT  
12.08 X 6.00 X 2.44 MM  
1.40 CARAT  
FANCY YELLOW  
VVS 2  
40.7%  
68%  
Slightly Thick  
Long Faceted  
EXCELLENT  
EXCELLENT  
NONE  
IGI LG784603775  
Comments: This Laboratory Grown Diamond was created by Chemical Vapor Deposition (CVD) growth process.