



**ELECTRONIC COPY**

LG783671884  
Report verification at igi.org



March 21, 2026

IGI Report Number **LG783671884**

Description **LABORATORY GROWN DIAMOND**

Shape and Cutting Style **OVAL BRILLIANT**

Measurements **10.97 X 7.77 X 4.83 MM**

**GRADING RESULTS**

Carat Weight **2.55 CARATS**

Color Grade **D**

Clarity Grade **VS 1**

March 21, 2026  
IGI Report Number **LG783671884**  
Description **LABORATORY GROWN DIAMOND**  
Shape and Cutting Style **OVAL BRILLIANT**  
Measurements **10.97 X 7.77 X 4.83 MM**

**GRADING RESULTS**

Carat Weight **2.55 CARATS**

Color Grade **D**

Clarity Grade **VS 1**

**ADDITIONAL GRADING INFORMATION**

Polish **EXCELLENT**

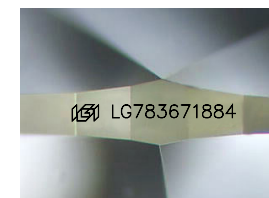
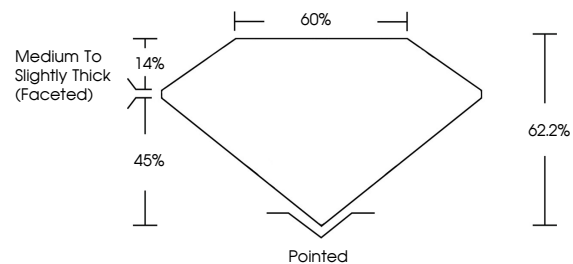
Symmetry **EXCELLENT**

Fluorescence **NONE**

Inscription(s) **IGI LG783671884**

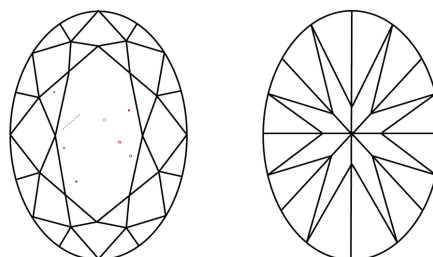
Comments: This Laboratory Grown Diamond was created by Chemical Vapor Deposition (CVD) growth process. Type IIa

**PROPORTIONS**



Sample Image Used

**CLARITY CHARACTERISTICS**



**KEY TO SYMBOLS**

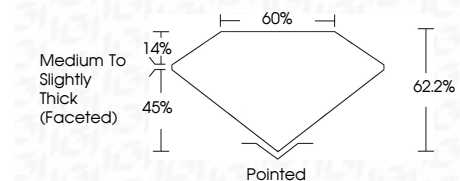
Red symbols indicate internal characteristics.  
Green symbols indicate external characteristics.

**COLOR**

D E F G H I J Faint Very Light Light

**CLARITY**

FL	IF	VS <sup>1-2</sup>	VS <sup>1-2</sup>	SI <sup>1-2</sup>	I <sup>1-3</sup>
Flawless	Internally Flawless	Very Very Slightly Included	Very Slightly Included	Slightly Included	Included



**ADDITIONAL GRADING INFORMATION**

Polish **EXCELLENT**

Symmetry **EXCELLENT**

Fluorescence **NONE**

Inscription(s) **IGI LG783671884**

Comments: This Laboratory Grown Diamond was created by Chemical Vapor Deposition (CVD) growth process. Type IIa



**IGI**



March 21, 2026  
IGI Report No LG783671884  
OVAL BRILLIANT  
10.97 X 7.77 X 4.83 MM  
2.55 CARATS  
D  
2.55 CARATS  
D  
VS 1  
62.2%  
45%  
Medium to Slightly Thick (Faceted)  
Pointed  
EXCELLENT  
EXCELLENT  
NONE  
IGI LG783671884

Comments: This Laboratory Grown Diamond was created by Chemical Vapor Deposition (CVD) growth process. Type IIa