



ELECTRONIC COPY

LG783671807
Report verification at igi.org



March 21, 2026
IGI Report Number **LG783671807**
Description **LABORATORY GROWN DIAMOND**
Shape and Cutting Style **MODIFIED LOZENGE MIXED CUT**
Measurements **15.23 X 10.18 X 5.73 MM**
GRADING RESULTS
Carat Weight **4.55 CARATS**
Color Grade **F**
Clarity Grade **VVS 2**

March 21, 2026
IGI Report Number **LG783671807**
Description **LABORATORY GROWN DIAMOND**
Shape and Cutting Style **MODIFIED LOZENGE MIXED CUT**
Measurements **15.23 X 10.18 X 5.73 MM**

GRADING RESULTS

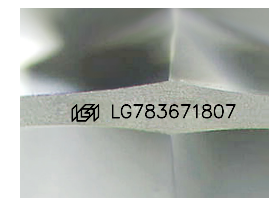
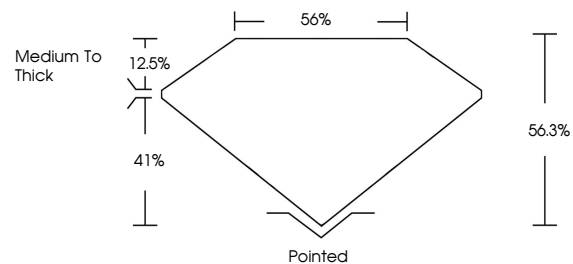
Carat Weight **4.55 CARATS**
Color Grade **F**
Clarity Grade **VVS 2**

ADDITIONAL GRADING INFORMATION

Polish **EXCELLENT**
Symmetry **EXCELLENT**
Fluorescence **NONE**
Inscription(s) **IGI LG783671807**

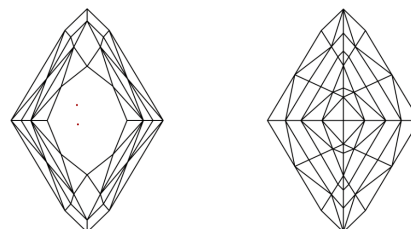
Comments: This Laboratory Grown Diamond was created by Chemical Vapor Deposition (CVD) growth process.
Type IIa

PROPORTIONS



Sample Image Used

CLARITY CHARACTERISTICS



KEY TO SYMBOLS

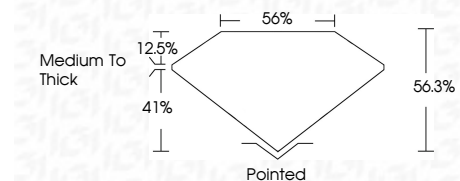
Red symbols indicate internal characteristics.
Green symbols indicate external characteristics.

COLOR

D E F G H I J Faint Very Light Light

CLARITY

| FL | IF | VVS ¹⁻² | VS ¹⁻² | SI ¹⁻² | I ¹⁻³ |
|----------|---------------------|-----------------------------|------------------------|-------------------|------------------|
| Flawless | Internally Flawless | Very Very Slightly Included | Very Slightly Included | Slightly Included | Included |



ADDITIONAL GRADING INFORMATION

Polish **EXCELLENT**
Symmetry **EXCELLENT**
Fluorescence **NONE**
Inscription(s) **IGI LG783671807**
Comments: This Laboratory Grown Diamond was created by Chemical Vapor Deposition (CVD) growth process.
Type IIa



March 21, 2026
IGI Report No **LG783671807**
MODIFIED LOZENGE MIXED CUT
15.23 X 10.18 X 5.73 MM
Carat Weight **4.55 CARATS**
Color Grade **F**
Clarity Grade **VVS 2**
Depth **56.3%**
Table **56%**
Girdle **Medium To Thick**
Culet **Pointed**
Polish **EXCELLENT**
Symmetry **EXCELLENT**
Fluorescence **NONE**
Inscription(s) **IGI LG783671807**
Comments: This Laboratory Grown Diamond was created by Chemical Vapor Deposition (CVD) growth process.
Type IIa