



ELECTRONIC COPY

LG783669392
Report verification at igi.org



March 23, 2026
IGI Report Number LG783669392
Description LABORATORY GROWN DIAMOND
Shape and Cutting Style HEXAGONAL MODIFIED STEP CUT
Measurements 11.80 X 5.76 X 3.82 MM
GRADING RESULTS
Carat Weight 2.10 CARATS
Color Grade E
Clarity Grade VVS 2

LABORATORY GROWN DIAMOND REPORT

March 23, 2026
IGI Report Number LG783669392
Description LABORATORY GROWN DIAMOND
Shape and Cutting Style HEXAGONAL MODIFIED STEP CUT
Measurements 11.80 X 5.76 X 3.82 MM

GRADING RESULTS

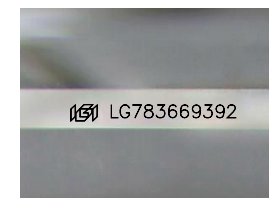
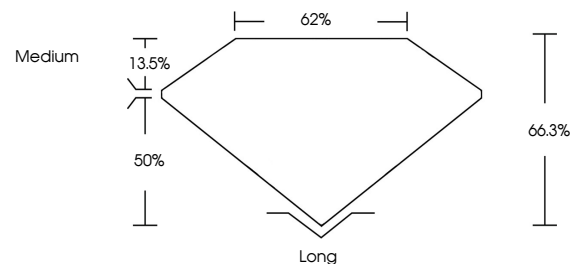
Carat Weight 2.10 CARATS
Color Grade E
Clarity Grade VVS 2

ADDITIONAL GRADING INFORMATION

Polish EXCELLENT
Symmetry EXCELLENT
Fluorescence NONE
Inscription(s) LG783669392

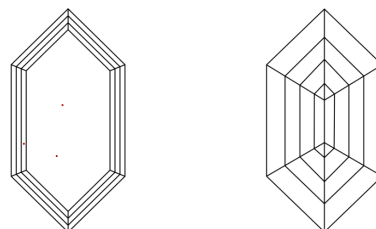
Comments: This Laboratory Grown Diamond was created by Chemical Vapor Deposition (CVD) growth process. Type IIa

PROPORTIONS



Sample Image Used

CLARITY CHARACTERISTICS



KEY TO SYMBOLS

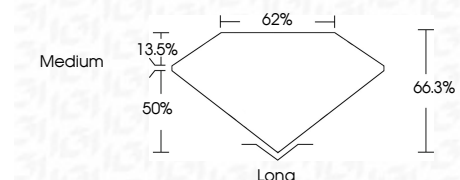
Red symbols indicate internal characteristics.
Green symbols indicate external characteristics.

COLOR

D E F G H I J Faint Very Light Light

CLARITY

FL IF VVS 1-2 VS 1-2 SI 1-2 I 1-3
Flawless Internally Flawless Very Very Slightly Included Very Slightly Included Slightly Included Included



ADDITIONAL GRADING INFORMATION

Polish EXCELLENT
Symmetry EXCELLENT
Fluorescence NONE
Inscription(s) LG783669392
Comments: This Laboratory Grown Diamond was created by Chemical Vapor Deposition (CVD) growth process. Type IIa



March 23, 2026
IGI Report No LG783669392
HEXAGONAL MODIFIED STEP CUT
11.80 X 5.76 X 3.82 MM
2.10 CARATS E
Color Grade VVS 2
Depth 66.3%
Girdle 62%
Medium
Long
Culet EXCELLENT
Polish EXCELLENT
Symmetry EXCELLENT
Fluorescence NONE
Inscription(s) LG783669392
Comments: This Laboratory Grown Diamond was created by Chemical Vapor Deposition (CVD) growth process. Type IIa