



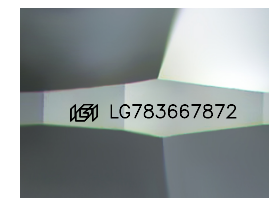
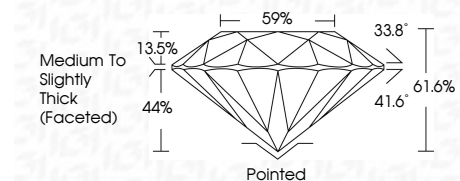
ELECTRONIC COPY

LG783667872
Report verification at igi.org



March 23, 2026
IGI Report Number **LG783667872**
Description **LABORATORY GROWN DIAMOND**
Shape and Cutting Style **ROUND BRILLIANT**
Measurements **8.13 - 8.19 X 5.03 MM**

GRADING RESULTS
Carat Weight **2.05 CARATS**
Color Grade **E**
Clarity Grade **VVS 2**
Cut Grade **EXCELLENT**



Sample Image Used

ADDITIONAL GRADING INFORMATION
Polish **EXCELLENT**
Symmetry **EXCELLENT**
Fluorescence **NONE**
Inscription(s) **IGI LG783667872**
Comments: This Laboratory Grown Diamond was created by Chemical Vapor Deposition (CVD) growth process. Type IIa



March 23, 2026
IGI Report No **LG783667872**
ROUND BRILLIANT
8.13 - 8.19 X 5.03 MM
2.05 CARATS
Color Grade **E**
Clarity Grade **VVS 2**
Depth **EXCELLENT**
61.6%
59%
Medium To Slightly Thick (Faceted)
Culet **Pointed**
Polish **EXCELLENT**
Symmetry **EXCELLENT**
Fluorescence **NONE**
Inscription(s) **IGI LG783667872**
Comments: This Laboratory Grown Diamond was created by Chemical Vapor Deposition (CVD) growth process. Type IIa

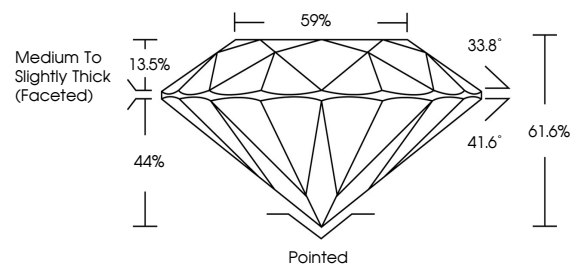
March 23, 2026
IGI Report Number **LG783667872**
Description **LABORATORY GROWN DIAMOND**
Shape and Cutting Style **ROUND BRILLIANT**
Measurements **8.13 - 8.19 X 5.03 MM**

GRADING RESULTS
Carat Weight **2.05 CARATS**
Color Grade **E**
Clarity Grade **VVS 2**
Cut Grade **EXCELLENT**

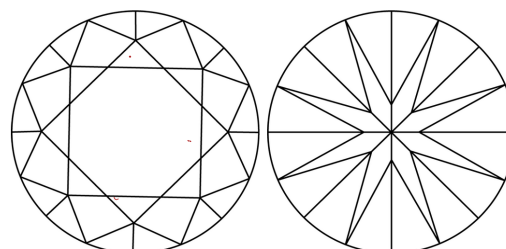
ADDITIONAL GRADING INFORMATION
Polish **EXCELLENT**
Symmetry **EXCELLENT**
Fluorescence **NONE**
Inscription(s) **IGI LG783667872**

Comments: This Laboratory Grown Diamond was created by Chemical Vapor Deposition (CVD) growth process. Type IIa

PROPORTIONS



CLARITY CHARACTERISTICS



KEY TO SYMBOLS

Red symbols indicate internal characteristics.
Green symbols indicate external characteristics.

COLOR

D E F G H I J Faint Very Light Light

CLARITY

FL	IF	VVS ¹⁻²	VS ¹⁻²	SI ¹⁻²	I ¹⁻³
Flawless	Internally Flawless	Very Very Slightly Included	Very Slightly Included	Slightly Included	Included

