



**ELECTRONIC COPY**

LG783667728  
Report verification at igi.org



April 16, 2026  
IGI Report Number **LG783667728**  
Description **LABORATORY GROWN DIAMOND**  
Shape and Cutting Style **TRIANGULAR BRILLIANT**  
Measurements **8.08 X 9.07 X 5.10 MM**  
**GRADING RESULTS**  
Carat Weight **2.01 CARATS**  
Color Grade **FANCY LIGHT YELLOW**  
Clarity Grade **VS 2**

April 16, 2026  
IGI Report Number **LG783667728**  
Description **LABORATORY GROWN DIAMOND**  
Shape and Cutting Style **TRIANGULAR BRILLIANT**  
Measurements **8.08 X 9.07 X 5.10 MM**

**GRADING RESULTS**

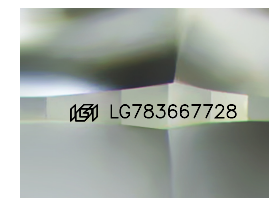
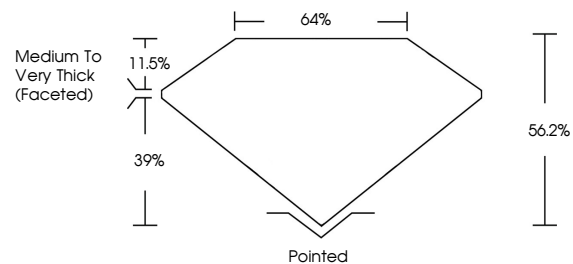
Carat Weight **2.01 CARATS**  
Color Grade **FANCY LIGHT YELLOW**  
Clarity Grade **VS 2**

**ADDITIONAL GRADING INFORMATION**

Polish **EXCELLENT**  
Symmetry **VERY GOOD**  
Fluorescence **NONE**  
Inscription(s) **IGI LG783667728**

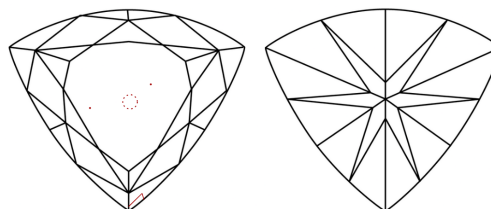
Comments: This Laboratory Grown Diamond was created by Chemical Vapor Deposition (CVD) growth process.

**PROPORTIONS**



Sample Image Used

**CLARITY CHARACTERISTICS**



**KEY TO SYMBOLS**

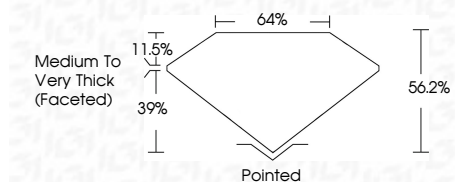
Red symbols indicate internal characteristics.  
Green symbols indicate external characteristics.

**COLOR**

D E F G H I J Faint Very Light Light

**CLARITY**

FL	IF	VS <sup>1-2</sup>	VS <sup>1-2</sup>	SI <sup>1-2</sup>	I <sup>1-3</sup>
Flawless	Internally Flawless	Very Very Slightly Included	Very Slightly Included	Slightly Included	Included



**ADDITIONAL GRADING INFORMATION**

Polish **EXCELLENT**  
Symmetry **VERY GOOD**  
Fluorescence **NONE**  
Inscription(s) **IGI LG783667728**  
Comments: This Laboratory Grown Diamond was created by Chemical Vapor Deposition (CVD) growth process.



**IGI**



April 16, 2026  
IGI Report No LG783667728  
**TRIANGULAR BRILLIANT**  
8.08 X 9.07 X 5.10 MM  
2.01 CARATS  
FANCY LIGHT YELLOW  
VS 2  
56.2%  
39%  
11.5%  
64%  
Medium to Very Thick (Faceted)  
Pointed  
EXCELLENT  
VERY GOOD  
NONE  
IGI LG783667728  
Comments: This Laboratory Grown Diamond was created by Chemical Vapor Deposition (CVD) growth process.