



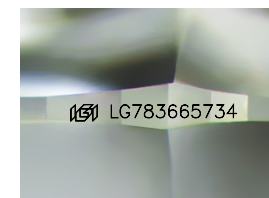
**ELECTRONIC COPY**

LG783665734  
Report verification at igi.org



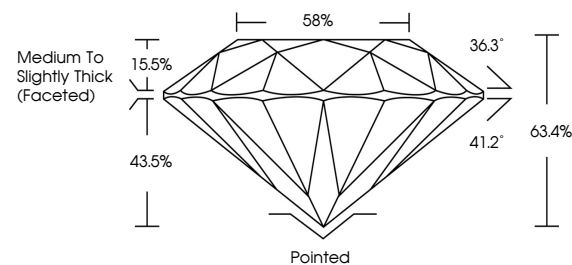
March 21, 2026  
IGI Report Number **LG783665734**  
Description **LABORATORY GROWN DIAMOND**  
Shape and Cutting Style **ROUND BRILLIANT**  
Measurements **6.49 - 6.52 X 4.12 MM**

**GRADING RESULTS**  
Carat Weight **1.09 CARAT**  
Color Grade **F**  
Clarity Grade **VS 1**  
Cut Grade **EXCELLENT**

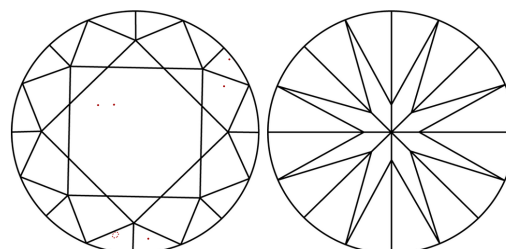


Sample Image Used

**PROPORTIONS**



**CLARITY CHARACTERISTICS**



**KEY TO SYMBOLS**

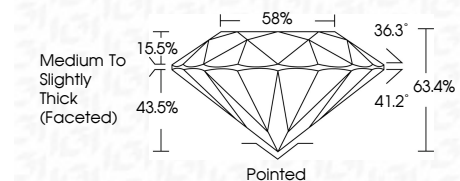
Red symbols indicate internal characteristics.  
Green symbols indicate external characteristics.

**COLOR**

D E F G H I J Faint Very Light Light

**CLARITY**

| FL       | IF                  | VS <sup>1-2</sup>           | VS <sup>1-2</sup>      | SI <sup>1-2</sup> | I <sup>1-3</sup> |
|----------|---------------------|-----------------------------|------------------------|-------------------|------------------|
| Flawless | Internally Flawless | Very Very Slightly Included | Very Slightly Included | Slightly Included | Included         |



**ADDITIONAL GRADING INFORMATION**

Polish **EXCELLENT**  
Symmetry **EXCELLENT**  
Fluorescence **NONE**  
Inscription(s) **(IGI) LG783665734**  
Comments: This Laboratory Grown Diamond was created by Chemical Vapor Deposition (CVD) growth process. Type IIa



March 21, 2026  
IGI Report No LG783665734  
ROUND BRILLIANT  
6.49 - 6.52 X 4.12 MM  
1.09 CARAT  
F  
Color Grade  
VS 1  
Clarity Grade  
EXCELLENT  
63.4%  
88%  
Medium To Slightly Thick (Faceted)  
Pointed  
EXCELLENT  
EXCELLENT  
NONE  
Inscriptions(s)  
(IGI) LG783665734  
Comments: This Laboratory Grown Diamond was created by Chemical Vapor Deposition (CVD) growth process. Type IIa