



ELECTRONIC COPY

LG783664712
Report verification at igi.org



March 17, 2026

IGI Report Number **LG783664712**

Description **LABORATORY GROWN DIAMOND**

Shape and Cutting Style **ROUND BRILLIANT**

Measurements **7.48 - 7.52 X 4.54 MM**

GRADING RESULTS

Carat Weight **1.55 CARAT**

Color Grade **E**

Clarity Grade **VVS 2**

Cut Grade **EXCELLENT**

March 17, 2026

IGI Report Number **LG783664712**

Description **LABORATORY GROWN DIAMOND**

Shape and Cutting Style **ROUND BRILLIANT**

Measurements **7.48 - 7.52 X 4.54 MM**

GRADING RESULTS

Carat Weight **1.55 CARAT**

Color Grade **E**

Clarity Grade **VVS 2**

Cut Grade **EXCELLENT**

ADDITIONAL GRADING INFORMATION

Polish **EXCELLENT**

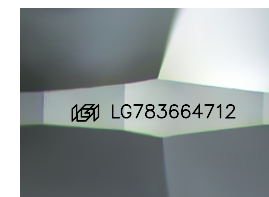
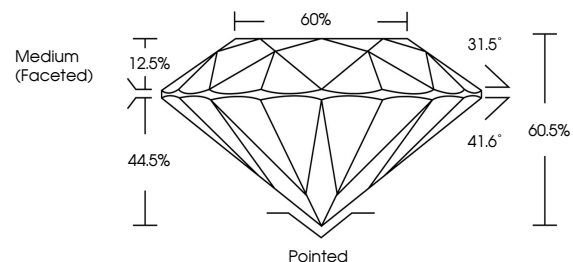
Symmetry **EXCELLENT**

Fluorescence **NONE**

Inscription(s) **LG783664712**

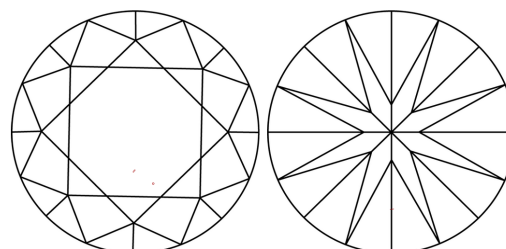
Comments: This Laboratory Grown Diamond was created by Chemical Vapor Deposition (CVD) growth process. Type IIa

PROPORTIONS



Sample Image Used

CLARITY CHARACTERISTICS



KEY TO SYMBOLS

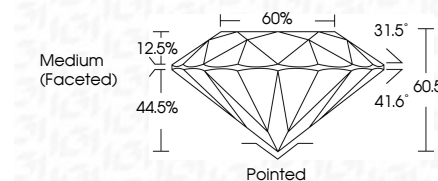
Red symbols indicate internal characteristics.
Green symbols indicate external characteristics.

COLOR

D E F G H I J Faint Very Light Light

CLARITY

FL	IF	VVS ¹⁻²	VS ¹⁻²	SI ¹⁻²	I ¹⁻³
Flawless	Internally Flawless	Very Very Slightly Included	Very Slightly Included	Slightly Included	Included



ADDITIONAL GRADING INFORMATION

Polish **EXCELLENT**

Symmetry **EXCELLENT**

Fluorescence **NONE**

Inscription(s) **LG783664712**

Comments: This Laboratory Grown Diamond was created by Chemical Vapor Deposition (CVD) growth process. Type IIa



IGI



March 17, 2026	IGI Report No LG783664712	1.55 CARAT	E	Pointed
ROUND BRILLIANT	7.48 - 7.52 X 4.54 MM	EXCELLENT	EXCELLENT	EXCELLENT
Carat Weight	Color Grade	Clarity Grade	Depth	Table
1.55 CARAT	E	VVS 2	60.5%	60%
EXCELLENT	EXCELLENT	EXCELLENT	EXCELLENT	EXCELLENT
Medium (Faceted)	Grade	Culet	Polish	Symmetry
Medium (Faceted)	Medium (Faceted)	None	EXCELLENT	EXCELLENT
None	None	None	None	None
Inscription(s)	Inscription(s)	Inscription(s)	Inscription(s)	Inscription(s)
LG783664712	LG783664712	LG783664712	LG783664712	LG783664712

Comments: This Laboratory Grown Diamond was created by Chemical Vapor Deposition (CVD) growth process. Type IIa