



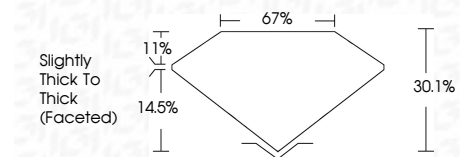
ELECTRONIC COPY

LG783664614
Report verification at igi.org



March 20, 2026
IGI Report Number **LG783664614**
Description **LABORATORY GROWN DIAMOND**
Shape and Cutting Style **CUSHION ROSE CUT**
Measurements **10.85 X 6.88 X 2.07 MM**

GRADING RESULTS
Carat Weight **1.91 CARAT**
Color Grade **D**
Clarity Grade **VVS 2**



ADDITIONAL GRADING INFORMATION
Polish **EXCELLENT**
Symmetry **VERY GOOD**
Fluorescence **NONE**
Inscription(s) **IGI LG783664614**
Comments: This Laboratory Grown Diamond was created by Chemical Vapor Deposition (CVD) growth process. Type IIa



March 20, 2026
IGI Report No LG783664614
CUSHION ROSE CUT
10.85 X 6.88 X 2.07 MM
1.91 CARAT
Color Grade **D**
Clarity Grade **VVS 2**
Depth **14.5%**
Table **11%**
Girdle **Slightly Thick To Thick (Faceted)**
Culet **EXCELLENT**
Polish **VERY GOOD**
Symmetry **NONE**
Fluorescence **NONE**
Inscription(s) **IGI LG783664614**
Comments: This Laboratory Grown Diamond was created by Chemical Vapor Deposition (CVD) growth process. Type IIa

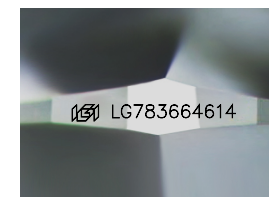
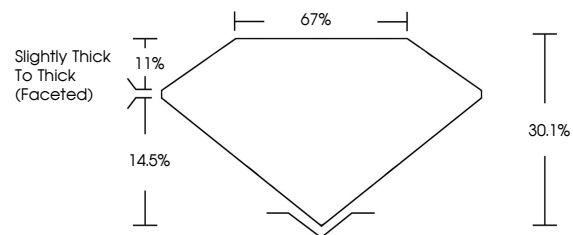
March 20, 2026
IGI Report Number **LG783664614**
Description **LABORATORY GROWN DIAMOND**
Shape and Cutting Style **CUSHION ROSE CUT**
Measurements **10.85 X 6.88 X 2.07 MM**

GRADING RESULTS
Carat Weight **1.91 CARAT**
Color Grade **D**
Clarity Grade **VVS 2**

ADDITIONAL GRADING INFORMATION
Polish **EXCELLENT**
Symmetry **VERY GOOD**
Fluorescence **NONE**
Inscription(s) **IGI LG783664614**

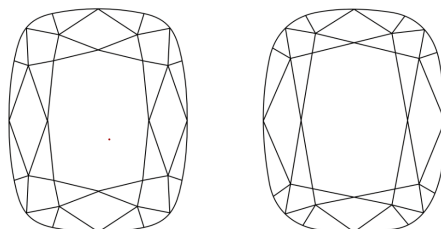
Comments: This Laboratory Grown Diamond was created by Chemical Vapor Deposition (CVD) growth process. Type IIa

PROPORTIONS



Sample Image Used

CLARITY CHARACTERISTICS



KEY TO SYMBOLS

Red symbols indicate internal characteristics.
Green symbols indicate external characteristics.

COLOR

D E F G H I J Faint Very Light Light

CLARITY

FL	IF	VVS ¹⁻²	VS ¹⁻²	SI ¹⁻²	I ¹⁻³
Flawless	Internally Flawless	Very Very Slightly Included	Very Slightly Included	Slightly Included	Included

