



**ELECTRONIC COPY**

LG783664290  
Report verification at igi.org



March 17, 2026  
IGI Report Number **LG783664290**  
Description **LABORATORY GROWN DIAMOND**  
Shape and Cutting Style **CUSHION MODIFIED BRILLIANT**  
Measurements **9.89 X 7.38 X 5.00 MM**  
**GRADING RESULTS**  
Carat Weight **2.86 CARATS**  
Color Grade **E**  
Clarity Grade **VS 2**

March 17, 2026  
IGI Report Number **LG783664290**  
Description **LABORATORY GROWN DIAMOND**  
Shape and Cutting Style **CUSHION MODIFIED BRILLIANT**  
Measurements **9.89 X 7.38 X 5.00 MM**

**GRADING RESULTS**

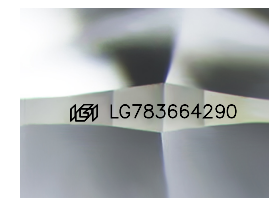
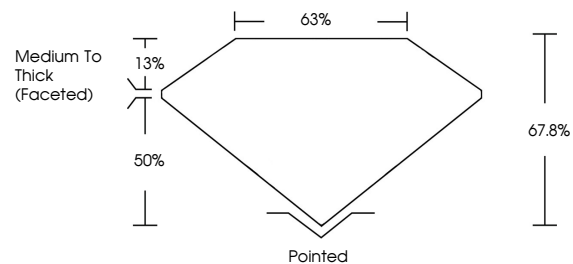
Carat Weight **2.86 CARATS**  
Color Grade **E**  
Clarity Grade **VS 2**

**ADDITIONAL GRADING INFORMATION**

Polish **EXCELLENT**  
Symmetry **EXCELLENT**  
Fluorescence **NONE**  
Inscription(s) **IGI LG783664290**

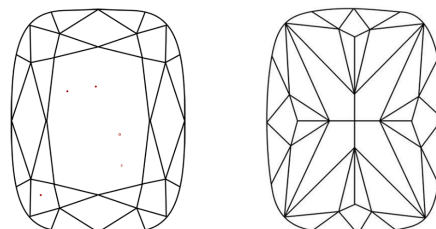
Comments: This Laboratory Grown Diamond was created by Chemical Vapor Deposition (CVD) growth process.  
Type IIa

**PROPORTIONS**



Sample Image Used

**CLARITY CHARACTERISTICS**



**KEY TO SYMBOLS**

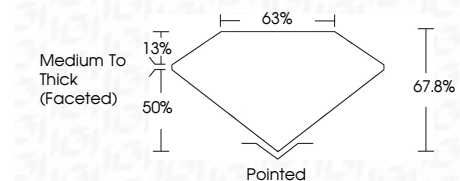
Red symbols indicate internal characteristics.  
Green symbols indicate external characteristics.

**COLOR**

D E F G H I J Faint Very Light Light

**CLARITY**

FL	IF	VS <sup>1-2</sup>	VS <sup>1-2</sup>	SI <sup>1-2</sup>	I <sup>1-3</sup>
Flawless	Internally Flawless	Very Very Slightly Included	Very Slightly Included	Slightly Included	Included



**ADDITIONAL GRADING INFORMATION**

Polish **EXCELLENT**  
Symmetry **EXCELLENT**  
Fluorescence **NONE**  
Inscription(s) **IGI LG783664290**  
Comments: This Laboratory Grown Diamond was created by Chemical Vapor Deposition (CVD) growth process.  
Type IIa



March 17, 2026  
IGI Report No **LG783664290**  
**CUSHION MODIFIED BRILLIANT**  
**9.89 X 7.38 X 5.00 MM**  
Carat Weight **2.86 CARATS**  
Color Grade **E**  
Clarity Grade **VS 2**  
Depth **67.8%**  
Table **63%**  
Girdle **Medium To Thick (Faceted)**  
Culet **Pointed**  
Polish **EXCELLENT**  
Symmetry **EXCELLENT**  
Fluorescence **NONE**  
Inscription(s) **IGI LG783664290**

Comments: This Laboratory Grown Diamond was created by Chemical Vapor Deposition (CVD) growth process.  
Type IIa