



ELECTRONIC COPY

LG783663612
Report verification at igi.org



March 21, 2026
IGI Report Number LG783663612
Description LABORATORY GROWN DIAMOND
Shape and Cutting Style CUT CORNERED RECTANGULAR MODIFIED BRILLIANT
Measurements 11.35 X 7.85 X 5.34 MM
GRADING RESULTS
Carat Weight 4.17 CARATS
Color Grade E
Clarity Grade VS 1

LABORATORY GROWN DIAMOND REPORT

March 21, 2026
IGI Report Number LG783663612
Description LABORATORY GROWN DIAMOND
Shape and Cutting Style CUT CORNERED RECTANGULAR MODIFIED BRILLIANT
Measurements 11.35 X 7.85 X 5.34 MM

GRADING RESULTS

Carat Weight 4.17 CARATS
Color Grade E
Clarity Grade VS 1

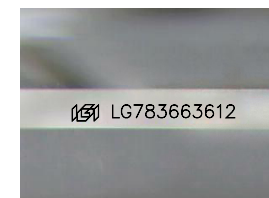
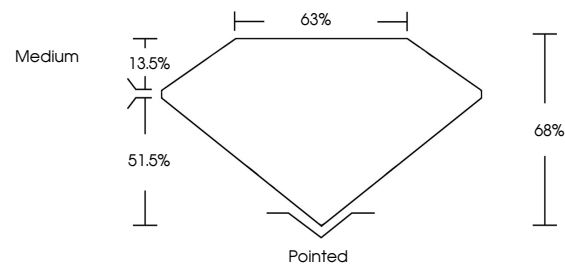
ADDITIONAL GRADING INFORMATION

Polish EXCELLENT
Symmetry EXCELLENT
Fluorescence NONE

Inscription(s) LG783663612

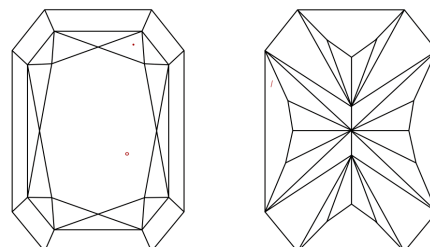
Comments: This Laboratory Grown Diamond was created by Chemical Vapor Deposition (CVD) growth process. Type IIa

PROPORTIONS



Sample Image Used

CLARITY CHARACTERISTICS



KEY TO SYMBOLS

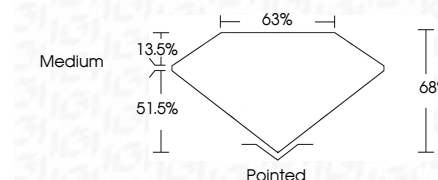
Red symbols indicate internal characteristics.
Green symbols indicate external characteristics.

COLOR

D E F G H I J Faint Very Light Light

CLARITY

FL IF VS 1-2 VS 2-3 SI 1-2 I 1-3
Flawless Internally Flawless Very Very Slightly Included Very Slightly Included Slightly Included Included



ADDITIONAL GRADING INFORMATION

Polish EXCELLENT
Symmetry EXCELLENT
Fluorescence NONE
Inscription(s) LG783663612
Comments: This Laboratory Grown Diamond was created by Chemical Vapor Deposition (CVD) growth process. Type IIa



IGI



March 21, 2026
IGI Report No LG783663612
CUT CORNERED RECT. MODIFIED BRILLIANT
4.17 CARATS E
11.35 X 7.85 X 5.34 MM
Color Grade E
Clarity Grade VS 1
Depth 68%
Table 63%
Girdle Medium
Culet Pointed
Polish EXCELLENT
Symmetry EXCELLENT
Fluorescence NONE
Inscription(s) LG783663612

Comments: This Laboratory Grown Diamond was created by Chemical Vapor Deposition (CVD) growth process. Type IIa