



ELECTRONIC COPY

LG783662241
Report verification at igi.org



March 25, 2026
IGI Report Number **LG783662241**
Description **LABORATORY GROWN DIAMOND**
Shape and Cutting Style **CUSHION MODIFIED BRILLIANT**
Measurements **11.09 X 7.25 X 5.19 MM**
GRADING RESULTS
Carat Weight **4.02 CARATS**
Color Grade **FANCY VIVID PINK**
Clarity Grade **SI 1**

March 25, 2026
IGI Report Number **LG783662241**
Description **LABORATORY GROWN DIAMOND**
Shape and Cutting Style **CUSHION MODIFIED BRILLIANT**
Measurements **11.09 X 7.25 X 5.19 MM**

GRADING RESULTS

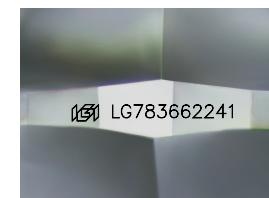
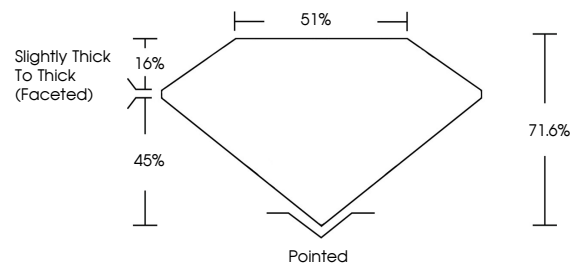
Carat Weight **4.02 CARATS**
Color Grade **FANCY VIVID PINK**
Clarity Grade **SI 1**

ADDITIONAL GRADING INFORMATION

Polish **EXCELLENT**
Symmetry **EXCELLENT**
Fluorescence **SLIGHT**
Inscription(s) **IGI LG783662241**

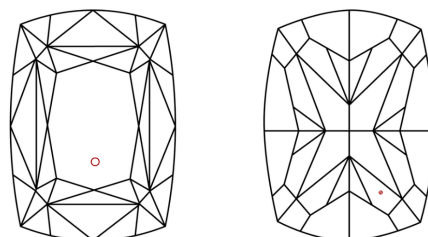
Comments: This Laboratory Grown Diamond was created by Chemical Vapor Deposition (CVD) growth process.
Indications of post-growth treatment.

PROPORTIONS



Sample Image Used

CLARITY CHARACTERISTICS



KEY TO SYMBOLS

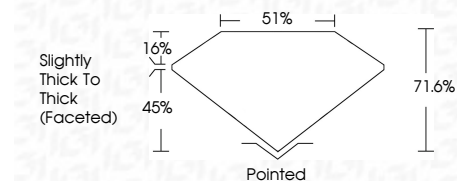
Red symbols indicate internal characteristics.
Green symbols indicate external characteristics.

COLOR

D E F G H I J Faint Very Light Light

CLARITY

FL	IF	VS ¹⁻²	VS ¹⁻²	SI ¹⁻²	I ¹⁻³
Flawless	Internally Flawless	Very Very Slightly Included	Very Slightly Included	Slightly Included	Included



ADDITIONAL GRADING INFORMATION

Polish **EXCELLENT**
Symmetry **EXCELLENT**
Fluorescence **SLIGHT**
Inscription(s) **IGI LG783662241**
Comments: This Laboratory Grown Diamond was created by Chemical Vapor Deposition (CVD) growth process.
Indications of post-growth treatment.



March 25, 2026
IGI Report No **LG783662241**
CUSHION MODIFIED BRILLIANT
4.02 CARATS
Carat Weight **FANCY VIVID PINK**
Color Grade **SI 1**
Clarity Grade **71.6%**
Depth **51%**
Table **Slightly Thick To Thick (Faceted)**
Girdle **Pointed**
Culet **EXCELLENT**
Polish **EXCELLENT**
Symmetry **EXCELLENT**
Fluorescence **SLIGHT**
Inscription(s) **IGI LG783662241**
Comments: This Laboratory Grown Diamond was created by Chemical Vapor Deposition (CVD) growth process.
Indications of post-growth treatment.