



ELECTRONIC COPY

LG783660445
Report verification at igi.org



March 20, 2026
IGI Report Number **LG783660445**
Description **LABORATORY GROWN DIAMOND**
Shape and Cutting Style **PRINCESS CUT**
Measurements **6.29 X 6.11 X 4.32 MM**
GRADING RESULTS
Carat Weight **1.45 CARAT**
Color Grade **FANCY LIGHT YELLOW**
Clarity Grade **VVS 2**

March 20, 2026
IGI Report Number **LG783660445**
Description **LABORATORY GROWN DIAMOND**
Shape and Cutting Style **PRINCESS CUT**
Measurements **6.29 X 6.11 X 4.32 MM**

GRADING RESULTS

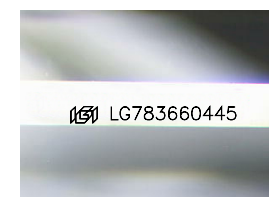
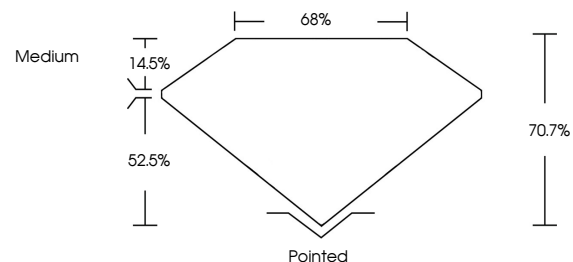
Carat Weight **1.45 CARAT**
Color Grade **FANCY LIGHT YELLOW**
Clarity Grade **VVS 2**

ADDITIONAL GRADING INFORMATION

Polish **EXCELLENT**
Symmetry **EXCELLENT**
Fluorescence **NONE**
Inscription(s) **IGI LG783660445**

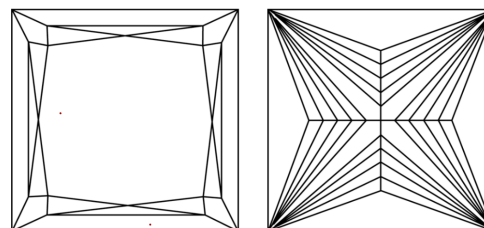
Comments: This Laboratory Grown Diamond was created by Chemical Vapor Deposition (CVD) growth process.

PROPORTIONS



Sample Image Used

CLARITY CHARACTERISTICS



KEY TO SYMBOLS

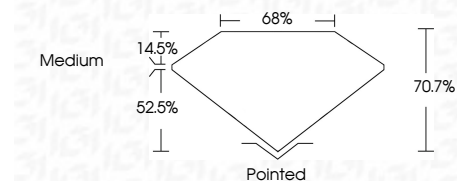
Red symbols indicate internal characteristics.
Green symbols indicate external characteristics.

COLOR

D E F G H I J Faint Very Light Light

CLARITY

FL	IF	VVS ¹⁻²	VS ¹⁻²	SI ¹⁻²	I ¹⁻³
Flawless	Internally Flawless	Very Very Slightly Included	Very Slightly Included	Slightly Included	Included



ADDITIONAL GRADING INFORMATION

Polish **EXCELLENT**
Symmetry **EXCELLENT**
Fluorescence **NONE**
Inscription(s) **IGI LG783660445**
Comments: This Laboratory Grown Diamond was created by Chemical Vapor Deposition (CVD) growth process.



March 20, 2026
IGI Report No **LG783660445**
PRINCESS CUT
1.45 CARAT
Carat Weight **FANCY LIGHT YELLOW**
Color Grade **VVS 2**
Clarity Grade **70.7%**
Depth **68%**
Table **Medium**
Girdle **Pointed**
Culet **EXCELLENT**
Polish **EXCELLENT**
Symmetry **NONE**
Fluorescence **NONE**
Inscription(s) **IGI LG783660445**
Comments: This Laboratory Grown Diamond was created by Chemical Vapor Deposition (CVD) growth process.