



ELECTRONIC COPY

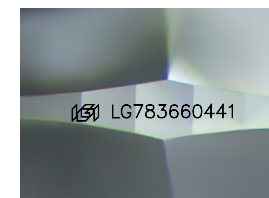
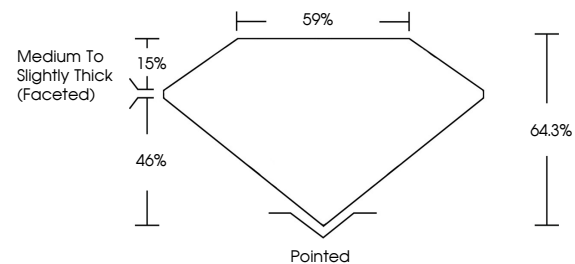
LG783660441
Report verification at igi.org



March 21, 2026
IGI Report Number **LG783660441**
Description **LABORATORY GROWN DIAMOND**
Shape and Cutting Style **CUSHION MODIFIED BRILLIANT**
Measurements **6.27 X 5.88 X 3.78 MM**
GRADING RESULTS
Carat Weight **1.22 CARAT**
Color Grade **FANCY VIVID YELLOW**
Clarity Grade **VS 2**

March 21, 2026
IGI Report Number **LG783660441**
Description **LABORATORY GROWN DIAMOND**
Shape and Cutting Style **CUSHION MODIFIED BRILLIANT**
Measurements **6.27 X 5.88 X 3.78 MM**

PROPORTIONS

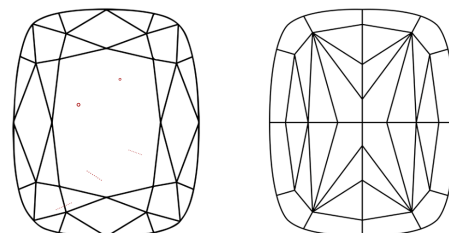


Sample Image Used

GRADING RESULTS

Carat Weight **1.22 CARAT**
Color Grade **FANCY VIVID YELLOW**
Clarity Grade **VS 2**

CLARITY CHARACTERISTICS



KEY TO SYMBOLS

Red symbols indicate internal characteristics.
Green symbols indicate external characteristics.

ADDITIONAL GRADING INFORMATION

Polish **EXCELLENT**
Symmetry **EXCELLENT**
Fluorescence **NONE**
Inscription(s) **IGI LG783660441**

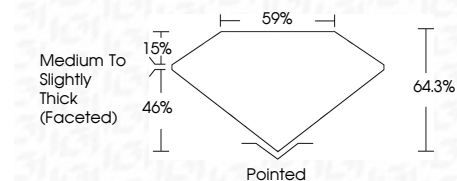
Comments: This Laboratory Grown Diamond was created by Chemical Vapor Deposition (CVD) growth process.

COLOR

D E F G H I J Faint Very Light Light

CLARITY

FL	IF	VS ¹⁻²	VS ¹⁻²	SI ¹⁻²	I ¹⁻³
Flawless	Internally Flawless	Very Very Slightly Included	Very Slightly Included	Slightly Included	Included



ADDITIONAL GRADING INFORMATION

Polish **EXCELLENT**
Symmetry **EXCELLENT**
Fluorescence **NONE**
Inscription(s) **IGI LG783660441**
Comments: This Laboratory Grown Diamond was created by Chemical Vapor Deposition (CVD) growth process.



March 21, 2026
IGI Report No **LG783660441**
CUSHION MODIFIED BRILLIANT
6.27 X 5.88 X 3.78 MM
Carat Weight **1.22 CARAT**
Color Grade **FANCY VIVID YELLOW**
Clarity Grade **VS 2**
Depth **64.3%**
Table **59%**
Girdle **Medium to Slightly Thick (Faceted)**
Culet **Pointed**
Polish **EXCELLENT**
Symmetry **EXCELLENT**
Fluorescence **NONE**
Inscription(s) **IGI LG783660441**
Comments: This Laboratory Grown Diamond was created by Chemical Vapor Deposition (CVD) growth process.