



ELECTRONIC COPY

LG783659878
Report verification at igi.org



March 23, 2026
IGI Report Number **LG783659878**
Description **LABORATORY GROWN DIAMOND**
Shape and Cutting Style **CUSHION MODIFIED BRILLIANT**
Measurements **12.08 X 9.14 X 6.40 MM**
GRADING RESULTS
Carat Weight **6.52 CARATS**
Color Grade **FANCY VIVID BLUE**
Clarity Grade **VVS 2**

LABORATORY GROWN DIAMOND REPORT

March 23, 2026
IGI Report Number **LG783659878**
Description **LABORATORY GROWN DIAMOND**
Shape and Cutting Style **CUSHION MODIFIED BRILLIANT**
Measurements **12.08 X 9.14 X 6.40 MM**

GRADING RESULTS

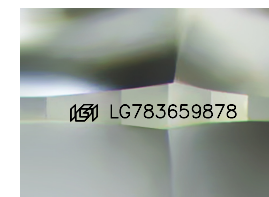
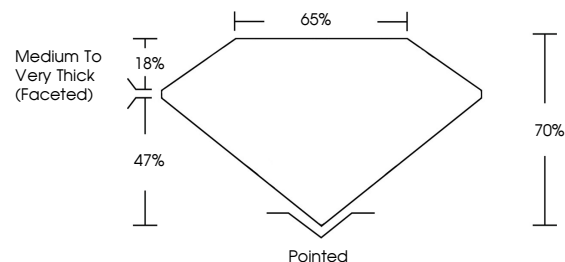
Carat Weight **6.52 CARATS**
Color Grade **FANCY VIVID BLUE**
Clarity Grade **VVS 2**

ADDITIONAL GRADING INFORMATION

Polish **EXCELLENT**
Symmetry **EXCELLENT**
Fluorescence **NONE**
Inscription(s) **IGI LG783659878**

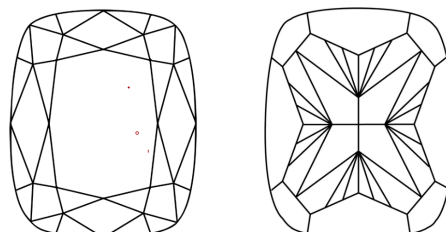
Comments: This Laboratory Grown Diamond was created by Chemical Vapor Deposition (CVD) growth process.
Indications of post-growth treatment.

PROPORTIONS



Sample Image Used

CLARITY CHARACTERISTICS



KEY TO SYMBOLS

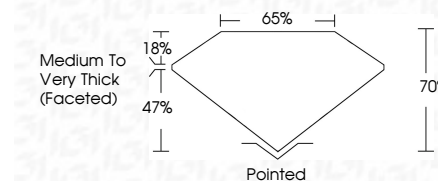
Red symbols indicate internal characteristics.
Green symbols indicate external characteristics.

COLOR

D E F G H I J Faint Very Light Light

CLARITY

FL	IF	VVS ¹⁻²	VS ¹⁻²	SI ¹⁻²	I ¹⁻³
Flawless	Internally Flawless	Very Very Slightly Included	Very Slightly Included	Slightly Included	Included



ADDITIONAL GRADING INFORMATION

Polish **EXCELLENT**
Symmetry **EXCELLENT**
Fluorescence **NONE**
Inscription(s) **IGI LG783659878**
Comments: This Laboratory Grown Diamond was created by Chemical Vapor Deposition (CVD) growth process.
Indications of post-growth treatment.



IGI



March 23, 2026
IGI Report No **LG783659878**
CUSHION MODIFIED BRILLIANT
12.08 X 9.14 X 6.40 MM
Carat Weight **6.52 CARATS**
Color Grade **FANCY VIVID BLUE**
Clarity Grade **VVS 2**
Depth **70%**
Table **65%**
Girdle **Medium to Very Thick (Faceted)**
Culet **Pointed**
Polish **EXCELLENT**
Symmetry **EXCELLENT**
Fluorescence **NONE**
Inscription(s) **IGI LG783659878**

Comments: This Laboratory Grown Diamond was created by Chemical Vapor Deposition (CVD) growth process.
Indications of post-growth treatment.