



ELECTRONIC COPY

LG783658555 Report verification at igi.org



March 17, 2026 IGI Report Number LG783658555 Description LABORATORY GROWN DIAMOND Shape and Cutting Style PRINCESS CUT Measurements 6.83 X 6.76 X 4.94 MM GRADING RESULTS Carat Weight 2.00 CARATS Color Grade E Clarity Grade VVS 1

LABORATORY GROWN DIAMOND REPORT

March 17, 2026 IGI Report Number LG783658555 Description LABORATORY GROWN DIAMOND Shape and Cutting Style PRINCESS CUT Measurements 6.83 X 6.76 X 4.94 MM

GRADING RESULTS

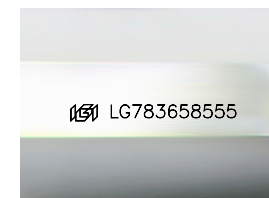
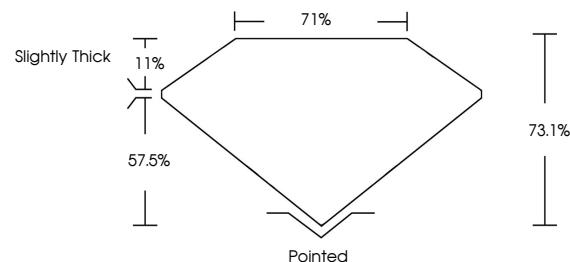
Carat Weight 2.00 CARATS Color Grade E Clarity Grade VVS 1

ADDITIONAL GRADING INFORMATION

Polish EXCELLENT Symmetry EXCELLENT Fluorescence NONE Inscription(s) IGI LG783658555

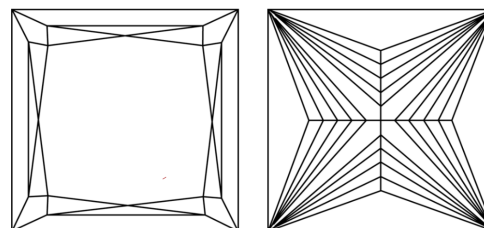
Comments: This Laboratory Grown Diamond was created by Chemical Vapor Deposition (CVD) growth process. Type IIa

PROPORTIONS



Sample Image Used

CLARITY CHARACTERISTICS



KEY TO SYMBOLS

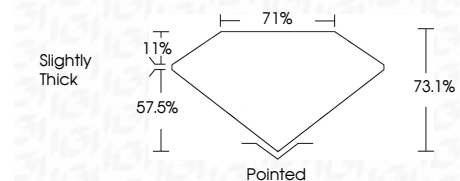
Red symbols indicate internal characteristics. Green symbols indicate external characteristics.

COLOR

D E F G H I J Faint Very Light Light

CLARITY

Table with columns: FL, IF, VS 1-2, VS 1-2, SI 1-2, I 1-3. Row labels: Flawless, Internally Flawless, Very Very Slightly Included, Very Slightly Included, Slightly Included, Included



ADDITIONAL GRADING INFORMATION

Polish EXCELLENT Symmetry EXCELLENT Fluorescence NONE Inscription(s) IGI LG783658555 Comments: This Laboratory Grown Diamond was created by Chemical Vapor Deposition (CVD) growth process. Type IIa



Certified SUSTAINABILITY RATED DIAMOND SCS GLOBAL SERVICES All certified diamonds come with an individual certificate, ONLY available at an accredited retailer. Includes QR code and text: FOR THE SUSTAINABILITY RATED CERTIFICATE, SCAN HERE ->



Summary of report details: March 17, 2026, IGI Report No LG783658555, PRINCESS CUT, 2.00 CARATS, Color Grade E, Clarity Grade VVS 1, Measurements 6.83 X 6.76 X 4.94 MM, Depth 73.1%, Table 71%, Girdle Slightly Thick, Culet Pointed, Polish EXCELLENT, Symmetry EXCELLENT, Fluorescence NONE, Inscription(s) IGI LG783658555. Comments: This Laboratory Grown Diamond was created by Chemical Vapor Deposition (CVD) growth process. Type IIa