



ELECTRONIC COPY

LG783656675
Report verification at igi.org



March 18, 2026
IGI Report Number **LG783656675**
Description **LABORATORY GROWN DIAMOND**
Shape and Cutting Style **RECTANGULAR CUSHION ROSE CUT**
Measurements **11.20 X 6.43 X 2.10 MM**
GRADING RESULTS
Carat Weight **1.46 CARAT**
Color Grade **G**
Clarity Grade **VS 1**

March 18, 2026
IGI Report Number **LG783656675**
Description **LABORATORY GROWN DIAMOND**
Shape and Cutting Style **RECTANGULAR CUSHION ROSE CUT**
Measurements **11.20 X 6.43 X 2.10 MM**

GRADING RESULTS

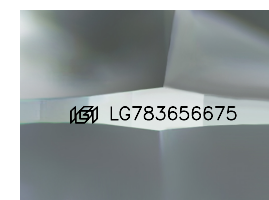
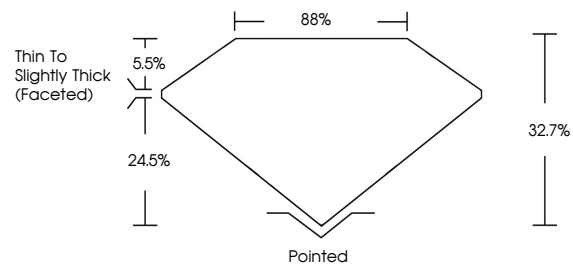
Carat Weight **1.46 CARAT**
Color Grade **G**
Clarity Grade **VS 1**

ADDITIONAL GRADING INFORMATION

Polish **VERY GOOD**
Symmetry **VERY GOOD**
Fluorescence **NONE**
Inscription(s) **IGI LG783656675**

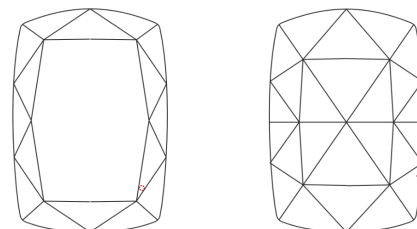
Comments: This Laboratory Grown Diamond was created by Chemical Vapor Deposition (CVD) growth process.
Type IIa

PROPORTIONS



Sample Image Used

CLARITY CHARACTERISTICS



KEY TO SYMBOLS

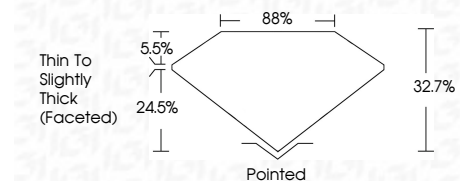
Red symbols indicate internal characteristics.
Green symbols indicate external characteristics.

COLOR

D E F G H I J Faint Very Light Light

CLARITY

| FL | IF | VS ¹⁻² | VS ¹⁻² | SI ¹⁻² | I ¹⁻³ |
|----------|---------------------|-----------------------------|------------------------|-------------------|------------------|
| Flawless | Internally Flawless | Very Very Slightly Included | Very Slightly Included | Slightly Included | Included |



ADDITIONAL GRADING INFORMATION

Polish **VERY GOOD**
Symmetry **VERY GOOD**
Fluorescence **NONE**
Inscription(s) **IGI LG783656675**
Comments: This Laboratory Grown Diamond was created by Chemical Vapor Deposition (CVD) growth process.
Type IIa



March 18, 2026
IGI Report No LG783656675
RECTANGULAR CUSHION ROSE CUT
11.20 X 6.43 X 2.10 MM
Carat Weight 1.46 CARAT
Color Grade G
Clarity Grade VS 1
Depth 32.7%
Table 5.5%
Girdle 85%
Thin To Slightly Thick (Faceted)
Culet Pointed
Polish VERY GOOD
Symmetry VERY GOOD
Fluorescence NONE
Inscription(s) IGI LG783656675
Comments: This Laboratory Grown Diamond was created by Chemical Vapor Deposition (CVD) growth process.
Type IIa