



ELECTRONIC COPY

LG783655164
Report verification at igi.org



March 20, 2026
IGI Report Number **LG783655164**
Description **LABORATORY GROWN DIAMOND**
Shape and Cutting Style **TRIANGULAR MIXED CUT**
Measurements **6.95 X 8.07 X 4.03 MM**

GRADING RESULTS

Carat Weight **1.11 CARAT**
Color Grade **D**
Clarity Grade **VVS 1**

March 20, 2026
IGI Report Number **LG783655164**
Description **LABORATORY GROWN DIAMOND**
Shape and Cutting Style **TRIANGULAR MIXED CUT**
Measurements **6.95 X 8.07 X 4.03 MM**

GRADING RESULTS

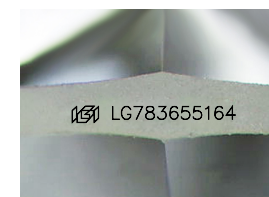
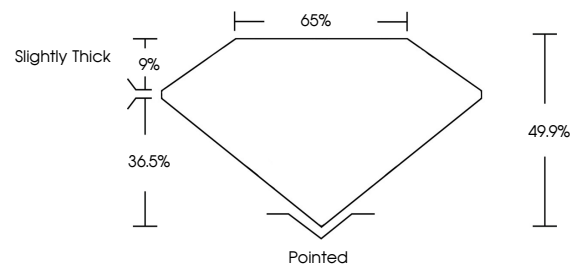
Carat Weight **1.11 CARAT**
Color Grade **D**
Clarity Grade **VVS 1**

ADDITIONAL GRADING INFORMATION

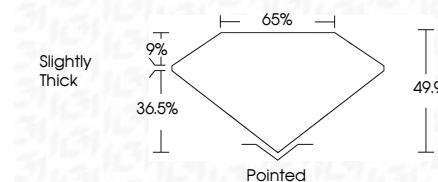
Polish **EXCELLENT**
Symmetry **EXCELLENT**
Fluorescence **NONE**
Inscription(s) **IGI LG783655164**

Comments: This Laboratory Grown Diamond was created by Chemical Vapor Deposition (CVD) growth process.
Type IIa

PROPORTIONS



Sample Image Used



COLOR

D E F G H I J Faint Very Light Light

CLARITY

FL	IF	VVS ¹⁻²	VS ¹⁻²	SI ¹⁻²	I ¹⁻³
Flawless	Internally Flawless	Very Very Slightly Included	Very Slightly Included	Slightly Included	Included

ADDITIONAL GRADING INFORMATION

Polish **EXCELLENT**
Symmetry **EXCELLENT**
Fluorescence **NONE**
Inscription(s) **IGI LG783655164**
Comments: This Laboratory Grown Diamond was created by Chemical Vapor Deposition (CVD) growth process.
Type IIa



IGI



March 20, 2026
IGI Report No LG783655164
TRIANGULAR MIXED CUT
6.95 X 8.07 X 4.03 MM
1.11 CARAT
D
VVS 1
49.9%
65%
Slightly Thick
Pointed
EXCELLENT
EXCELLENT
NONE
IGI LG783655164
Comments: This Laboratory Grown Diamond was created by Chemical Vapor Deposition (CVD) growth process.
Type IIa